

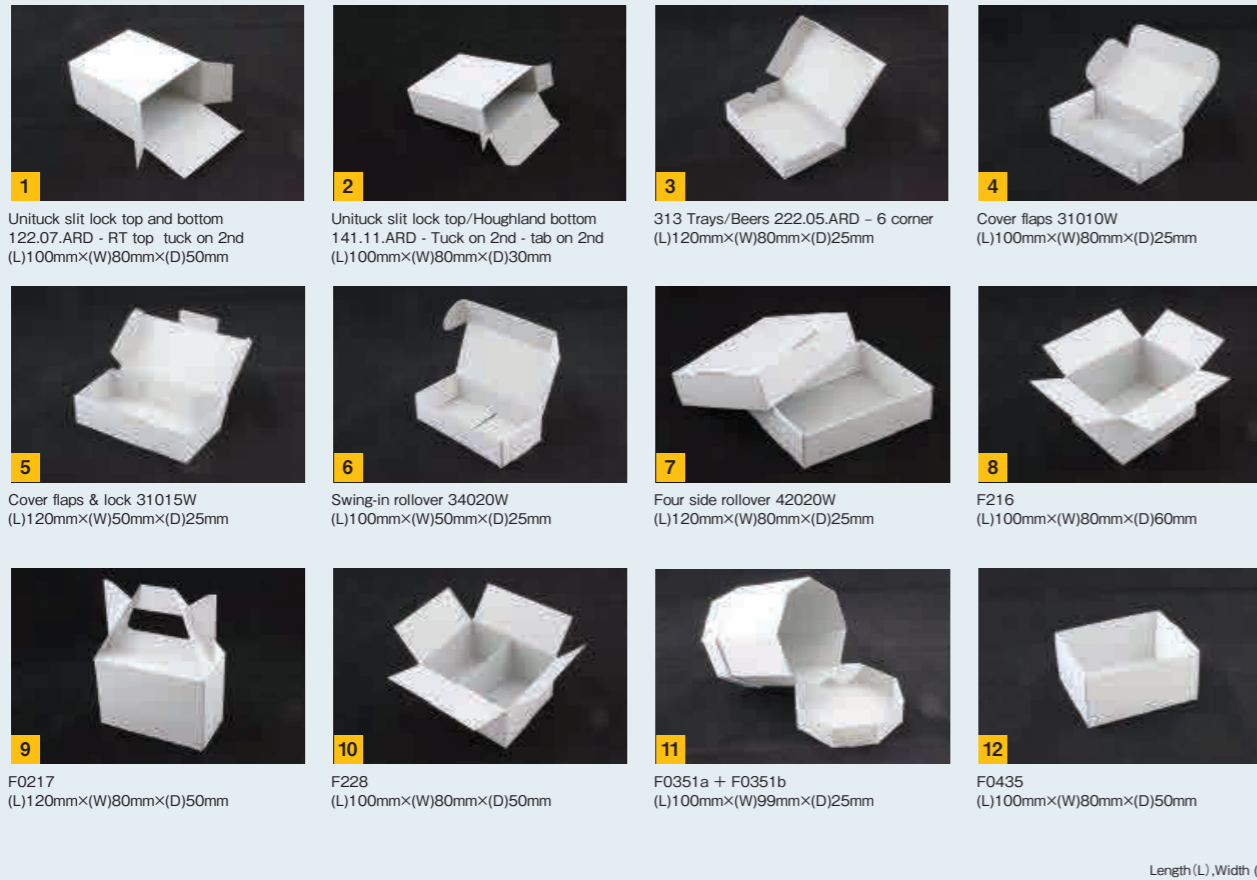
Standard package styles from the catalog

A wide range of packages can be created with a combination of ArtiosCAD DS and CFL-605RT. The CFL-605RT shortens the production time with its quick cutting and creasing capabilities. Here are some package samples created using the styles listed in the catalog.

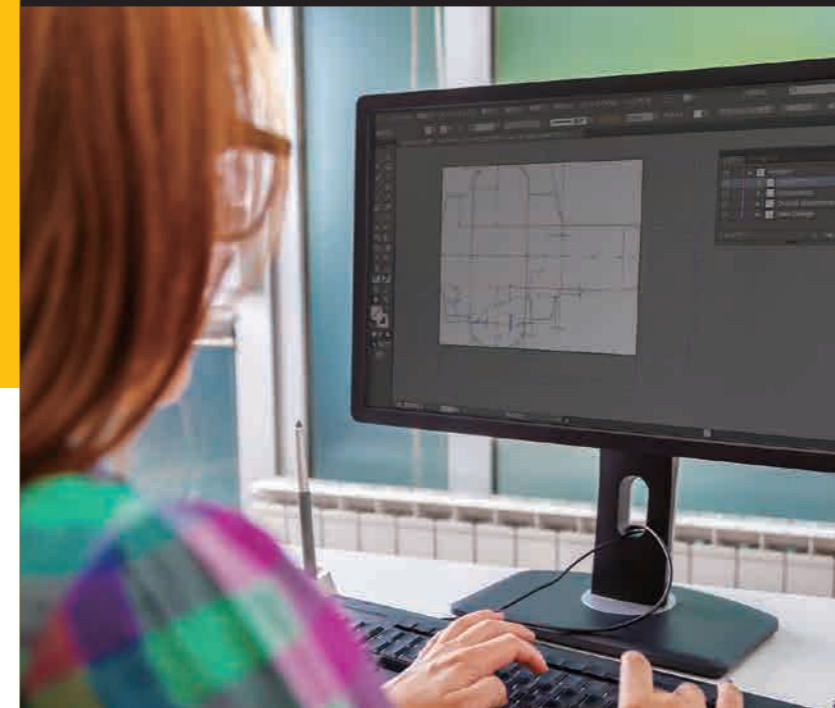
For
**INDUSTRIAL
DESIGN**

Packaging design CAD software
ArtiosCAD Designer Solution

Mimaki™



Easy Designing
Packaging design
in five minutes



Specifications

Product name	ArtiosCAD Designer Solution	Supported Adobe Illustrator versions for Esko Data Exchange	Adobe Illustrator ver. CS6, CC2014 and CC2015 (Win/Mac)
Program storage media	Program DVD	Memory	4GB or higher
Software type	Standalone software	HDD	50GB or higher and 500MB free space
OS	Windows 8.8.1 Pro/Enterprise (64bit): Most recommended Windows 7 Professional/Enterprise/Ultimate (64bit)	Network	TCP/IP v4 (TCP/IP v6 is not supported)
Language	Multi-language(Japanese, English, French, Spanish, German, Russian, Czech, Hungarian, Polish, Portuguese, Italian, Simplified/Traditional Chinese, Korean)	Display	1,024 x 768 High-color (16 bit or higher)

* Brochure descriptions comply with Artios CAD Designer Solutionver. 14.1.1.

Mimaki
mimaki.com

MIMAKI ENGINEERING CO., LTD.

2182-3 Shigeno-Otsu, Tomi-city, Nagano, Japan
TEL: +81-268-64-2281

Mimaki Global Network

USA	MIMAKI USA, INC.	Europe	MIMAKI EUROPE B.V.
Brazil	MIMAKI BRASIL COMERCIO E IMPORTACAO LTDA	Indonesia	PT. MIMAKI INDONESIA
India	MIMAKI INDIA PRIVATE LIMITED	Australia	MIMAKI AUSTRALIA PTY. LTD.
Taiwan	MIMAKI ENGINEERING (TAIWAN) CO.,LTD.	China	SHANGHAI MIMAKI TRADING CO.,LTD.
Singapore	MIMAKI SINGAPORE PTE. LTD.		



Design Software for Packaging

ArtiosCAD Designer Solution Specialized software for simple package design

ArtiosCAD Designer Solution (ArtiosCAD DS) is the dedicated Mimaki version of ArtiosCAD, which is the most widely used packaging design CAD software. The ArtiosCAD DS offers hundreds of package designs that can be built easily by a designer who has never used CAD software.

Builder (Package creation using standard designs)

Easy package design creation by selecting a design style from a standards catalog and entering dimensions.

Designer (Original design package creation)

Designer comprises a range of useful tools for creating an original package design from scratch.

Connection Plus

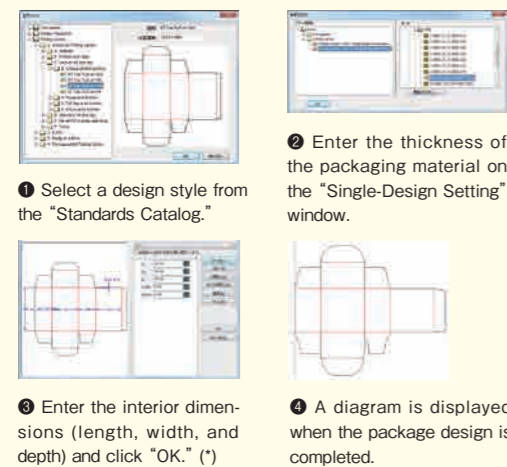
Connection Plus is used to design data exchanges. Paper size, origin point, output formats, and other detailed settings can be specified.

Easy packaging design by selecting a style from the catalog

Builder allows a designer to create a package design in a few minutes by selecting a design style from the catalog and specifying length, width, and depth. In addition, dimensions of the design are automatically adjusted according to the thickness of the material specified.



Package design creation procedure



*Parameters, shapes, and sizes of flaps can be specified by clicking "Next."

Simple original package design creation

Designer helps users create an original package design with various tools for drawing lines and rectangles and rounding off corners.

Useful functions for package design creation

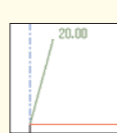
Rectangle from Line

This tool creates a rectangle based on a line on the diagram.



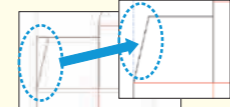
Line

This tool is used to draw a line. To draw a preferred line, the angle and length need to be specified.



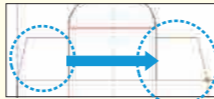
Trim Interior

This tool deletes part of a line. The line is automatically divided at the cross line.



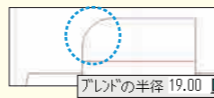
Copy Mirror about Vertical

The item selected is easily mirrored and copied on the vertical (x) axis.



Blend

This tool rounds the corners of items. Rounded corners are drawn by entering corner radius.



Conline* At Angle From Line

This tool draws a diagonal conline.



*Conline: Construction line



Original Goods Package System

Simple mock-up creation with ArtiosCAD DS, UV inkjet printer, and cutting plotter!

Original Goods Package System (OGPS) reduces the time spent on the process of making a prototype package. Conventionally, there were many work processes to create the package that suits a product. You would ask an outside contractor to create the package, and it would take a long time to complete the work because of misunderstandings, distance, time differences, etc. OGPS consists of the ArtiosCAD DS, the CFL-605RT*, and the UJF-6042MkII* inkjet printer. The system offers a total solution not only for printing on a product but also for the design and creation of product/cushion packaging. OGPS delivers effective high-mix low-volume production and significantly shortens the lead time for prototype creation and small lot production by on-demand production.



* CFL-605RT and UJF-6042MkII are sold separately.



Compact cutting plotter: CFL-605RT

The CFL-605RT delivers efficient on-demand package and cushioning production with various functions, including eccentric, tangential, and reciprocating cuttings and creasing. Effective cutting area is A2 extra (432 × 610 mm / 17 × 24 in) and greater.

Flatbed printer: UJF-6042MkII

The UJF-6042MkII is an LED UV flatbed inkjet printer that is capable of printing on an object up to A2 size (420 × 610 mm / 16.5 × 24 in.). It can print on a product as well as on packaging materials.

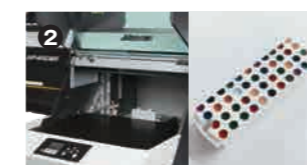
[Application] Printing on USB memory and creating packaging

ArtiosCAD DS/Package design creation process



Create a package design.

UJF-6042MkII Printing process



Direct decoration print on the product.

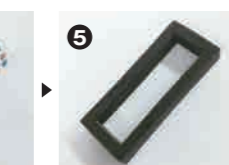


Print on the coated paper.

CFL-605RT Package creation process



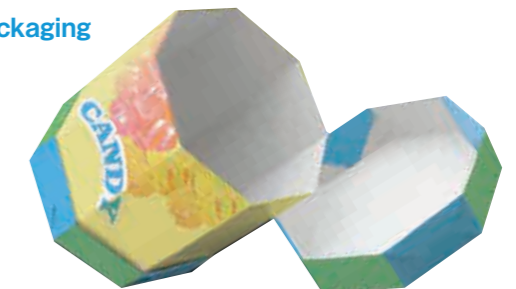
Cut the paper and assemble the box.



Cut the cushioning material.



Assemble all items and finish the production.



*Print image file is created using Adobe Illustrator.