

Cloud-based monitoring tool that supports operational efficiency and reliability.

Mimaki Cloud Technology **PICT**

PICT automatically collects operating status, ink usage, and error information, enabling accurate remote monitoring of printers and supporting more efficient business operations.

- Production Management
- Ink Refill Planning
- Maintenance Scheduling etc...



Software to support your workflow from design to output (included as standard)

Genuine RIP Software

Raster Link 7

Supports high print quality and easy operation

- Ink Saving Function - Easy for anyone to use.
- Supports cut data output to our entry-level CG-AR series cutting plotters.

Design Software

Simple create

Makes design easier than ever

Mimaki

Roll to Roll UV-LED Inkjet Printer

UJV200 series
UJV200-160 / UJV200-130

■ Specifications

Item	UJV200-160	UJV200-130
Print Head	On-demand piezo head	
Print Resolution	Y: 600, 900, 1,200 dpi X: 600, 1,200 dpi	
Head Gap	2 Levels by manual (1.5 mm / 2.0 mm)	
Media	Size	Width: 210 – 1,620 mm (8.3 – 63.8")
	Maximum Print Width	1,610 mm (63.4")
	Outer dia.	φ180 mm (7.1") or less
	Roll Weight	25 kg (55.1 lb) or less
	Core dia.	2 inches, 3 inches
Interface	USB2.0 / Ethernet 1000BASE-T	
Power Specifications	Single-phase AC 100–120 V ±10% / 11 A, Single-phase AC 200–240 V ±10% / 5.5 A, 50/60±1Hz	
Power Consumption	Max. 1,320 W / Standard 550 W / Min. 4.5 W or less	
Operational Environment	Temperature	20 – 30 degC (68 – 86 degF)
	Humidity	35 – 65 % RH (no condensation)
	Accuracy Guaranteed Temperature Range	20 – 25 degC (68 – 77 degF)
	Dust Level	0.15 mg/m ³ (equivalent to a typical office environment)
Dimensions (W x D x H)	2,770 x 748 x 1,405 mm (109.2 x 29.4 x 55.3")	2,520 x 748 x 1,405 mm (99.2 x 29.4 x 55.3")
Unit Weight	160 kg (352 lb)	155 kg (341 lb)

■ Print speed (PVC/Banner/ Synthetic paper)

1. 4 Color Ink Set			
	Print mode	-160 model	-130 model
High Quality	1200 x 1200 / 8pass	7.0m ² /h (75.3sqft/h)	6.0m ² /h (64.6sqft/h)
Quality	1200 x 600 / 6pass	10.0m ² /h (107.6sqft/h)	9.0m ² /h (96.9sqft/h)
Standard	600 x 600 / 6pass	14.0m ² /h (150.7sqft/h)	13.0m ² /h (139.9sqft/h)
High Speed	600 x 600 / 5pass	19.0m ² /h (204.5sqft/h)	18.0m ² /h (193.8sqft/h)
Draft	600 x 600 / 4pass	25.0m ² /h (269.1sqft/h)	22.0m ² /h (236.8sqft/h)
2. 4 Color+SP Ink Set			
	Print mode	-160 model	-130 model
High Quality	1200 x 1200 / 16pass	3.5m ² /h (37.7sqft/h)	3.0m ² /h (32.3sqft/h)
Quality	1200 x 600 / 12pass	5.0m ² /h (53.8sqft/h)	4.0m ² /h (43.1sqft/h)
Standard	1200 x 600 / 8pass	7.0m ² /h (75.3sqft/h)	6.0m ² /h (64.6sqft/h)
High Speed	900 x 600 / 8pass	9.3m ² /h (100.1sqft/h)	8.5m ² /h (91.5sqft/h)
Draft	600 x 600 / 8pass	12.0m ² /h (129.2sqft/h)	11.0m ² /h (118.4sqft/h)

* Speeds shown are for single-layer printing.
With 2(4Color+SP), speeds for 2-layer printing are approximately half of the values shown above.
* Draft mode is not available for PVC.

⚠ Inks and substrates:

- *For safe and reliable operation, please check media compatibility in advance
- *As physical properties of ink (adhesion, weather resistance etc.) are different depending on media, please be sure to have a print test in advance.
- *Depending on the application, primers, other surface treatment or surface protection such as lamination may be necessary.

■ Ink

Item	Color	Item Code	Remarks
ELS-170 (GREENGUARD Gold Certified Ink)	Cyan	ELS170-C-BA	1 L Bottle
	Magenta	ELS170-M-BA	
	Yellow	ELS170-Y-BA	
	Black	ELS170-K-BA	
	White	ELS170-W-BA	
ELS-175 (GREENGUARD Gold Certified Ink)	Cyan	ELS175-C-BA	
	Magenta	ELS175-M-BA	
	Yellow	ELS175-Y-BA	
	Black	ELS175-K-BA	
	White	ELS175-W-BA	
LUS-210 (GREENGUARD Gold Certified Ink)	Cyan	LUS21-C-BA	
	Magenta	LUS21-M-BA	
	Yellow	LUS21-Y-BA	
	Black	LUS21-K-BA	
	White	LUS21-W-BA	

The ELS-170, 175 and LUS-210 have acquired "GREENGUARD Gold certification", which is guaranteed to be suitable for schools and medical institutions based on the strictest chemical substance diffusion standards in the world. This ink generates almost no VOC¹⁾, which is the cause of photochemical oxidant generation, and is designed to reduce load to the global environment.



- ¹⁾ : VOC=Volatile organic compounds
- ²⁾ : No volatile organic compounds are generated after UV curing by our internal investigation, but may occur very slightly before curing.

■ Options

Item	Item Code	Remarks
Leveling Foot	OPT-J0502	Supports media weights of up to 45 kg.
NCU	OPT-J0422	
Ionizer 1600	OPT-J0457	
Ionizer 1300	OPT-J0463	
UJV200 Ionizer Connection Kit	OPT-01038	

⚠ Safety notice:

- This product is equipped with UV irradiation equipment. Please pay attention to the following notes in order to use safely.
- *Do not look directly into the UV light source nor place your hand, or expose your skin directly to the UV light source.
- *During UV curing printing, some odor may occur. Ensure adequate ventilation at all time
- *Depending upon print mode, some VOC emission from printed parts not yet cured and hardened may occur.
- *In addition, please be sure to read and follow the instructions and guidelines of the manual carefully.

•Some examples shown in this catalog are artificial renderings. •Specifications, designs and dimensions shown in this catalog may be subject to change without notice for technical improvements. •The corporate and merchandise names in this catalog are the trademarks or registered trademarks of the respective corporations. •Inkjet printers use extremely fine dots, so colors may vary slightly after replacement of print heads. •Also note that when using multiple printer units, colors could vary slightly from one unit to another due to slight individual differences. •Please note that descriptions and data in this catalog are as of March 2026.

Mimaki MIMAKI ENGINEERING CO., LTD.
2182-3 Shigeno-Otsu, Tomi-city, Nagano 389-0512, Japan
mimaki.com TEL: +81-268-64-2281

Mimaki Global Network

USA	MIMAKI USA, INC.	Europe	MIMAKI EUROPE B.V.
Brazil	MIMAKI BRASIL COMERCIO E IMPORTACAO LTDA	Indonesia	PT. MIMAKI INDONESIA
India	MIMAKI INDIA PRIVATE LIMITED	Australia	MIMAKI AUSTRALIA PTY. LTD.
Taiwan	MIMAKI ENGINEERING (TAIWAN) CO.,LTD.	China	SHANGHAI MIMAKI TRADING CO.,LTD.
Singapore	MIMAKI SINGAPORE PTE. LTD.	Thailand	MIMAKI (THAILAND) CO.,LTD.
Vietnam	MIMAKI VIETNAM CO., LTD.		

High-Quality Printing Made Easier



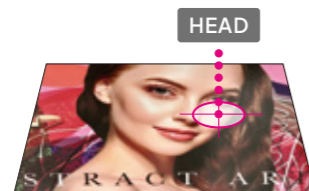
Quality

Superior Image Quality



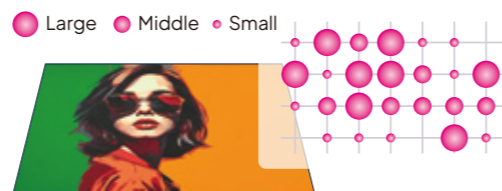
Precise control of ink droplets as small as 4 pl

Each ink droplet is placed exactly where intended, delivering high-quality images with no visible graininess.



Beautiful solid fills with high-density ink

Three precisely controlled droplet sizes are combined to produce smooth, even solid areas. Larger droplets provide coverage, while smaller dots refine details to create rich gradations and outstanding image quality.



Ease of Use

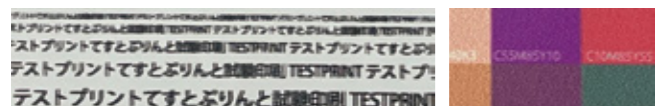
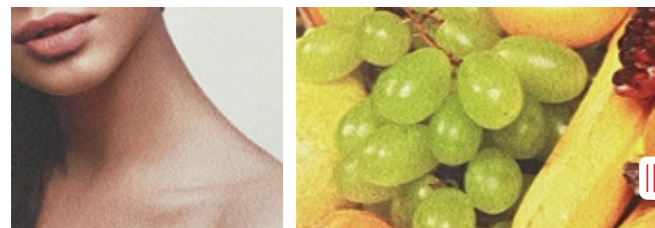
Achieve optimal image quality with ease —no expertise required.

DAS has evolved!

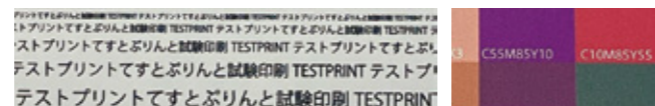
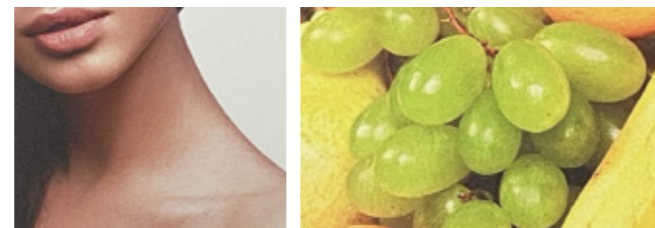
DAS2 (Dot Adjustment System 2)

With one-touch automatic adjustment, results are consistent regardless of the operator's skill level.

Before adjustment



After adjustment



Faster adjustment

Less media used for adjustment

Works on colored and transparent media

Versatility

Expand Your Business with Diverse Applications



Brings designs to life on large signage

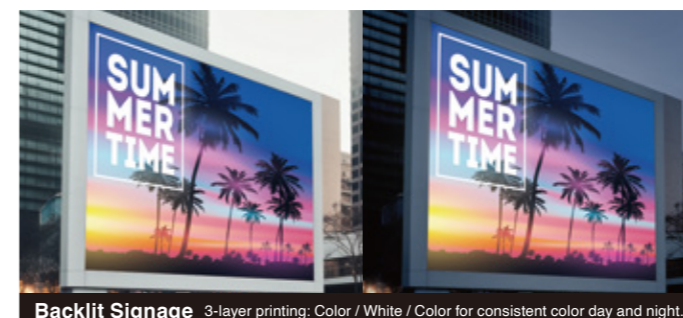


Wallpaper

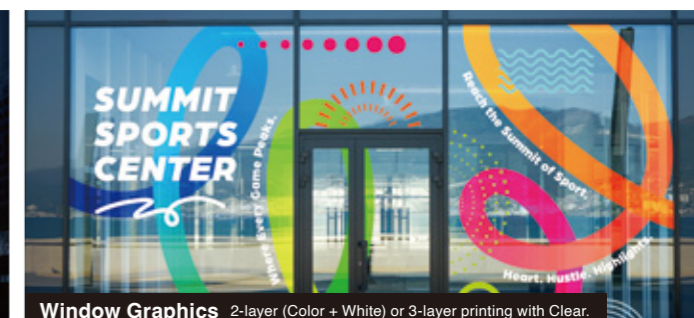


Floor Signage

Supports up to 3-layer printing (including white and clear) for high-value, premium output.



Backlit Signage 3-layer printing: Color / White / Color for consistent color day and night.



Window Graphics 2-layer (Color + White) or 3-layer printing with Clear.

Next-generation UV ink that's even safer for people and the environment

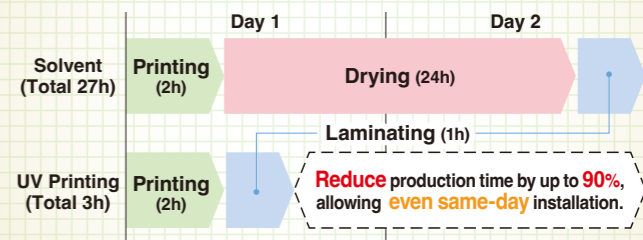
ELS Ink

Approximately **30%** less odor than previous inks for an improved user experience.

SVHC-Free*1 CMR-Free**2,*3

*1 Substances of Very High Concern (SVHC), which may pose significant risks to human health and the environment
 **2 Substances classified as Carcinogenic, Mutagenic, or Reprotoxic (CMR)
 *3 Indicates that as of March, 2026, it is not classified in the CMR category as an ink under the EU-CLP Regulation.

UV printing eliminates the drying process, enabling fast turnaround times



Reliable print speed

4Color Practical **14.0m²/h**

4Color + SP Single-layer printing Practical **7.0m²/h**

PVC/Banner/Synthetic paper (-160 model)

Simple Design

Single Print Head for Easy Maintenance



The single print head system reduces cleaning and adjustment time. Its straightforward design enables quick and easy operation.

Wide-Opening Cover for Easy Maintenance

Upward-Facing Control Panel for Easy Operation

Easy-to-Use Design Software for Everyone

Simple Create

Intuitive operation — no manual needed

Output supported from Simple Create

Compatible with Windows, macOS, iOS, and Android

