

# **RasterLinkTools Guide**

# Table of Contents

---

Precautions.....	3
About this guide.....	4
Notation used in this guide.....	4
Symbols used in this guide.....	4
How to obtain this guide and related manuals.....	4
Figures used in this manual.....	4

## Chapter 1 RasterLinkTools Overview and Setup

1.1 RasterLinkTools Function.....	6
1.2 System requirements.....	7
1.3 Installation and Version Upgrade.....	8
Installation and version upgrade procedure of RasterLinkTools for Illustrator for Windows.....	8
Installation and version upgrade procedure of RasterLinkTools for Illustrator for Macintosh.....	11
Installation and version upgrade procedure of RasterLinkTools for CorelDRAW.....	13
When RasterLinkTools and FineCut are installed in CorelDRAW.....	15

## Chapter 2 RasterLinkTools Operations

2.1 RasterLinkTools Screen Layout.....	20
2.2 RasterLinkTools Operations.....	25
Create a Cut Path.....	25
Create a Cut Path Around an Object.....	26
Extract an Object Outline.....	29
Create Image Data for a Special Color Job.....	32
Save Data for RasterLink.....	37
Creates image data for Kebab Taper printing.....	39
Update the RasterLinkTools Settings.....	42
Check for RasterLinkTools Updates.....	42

# Precautions

- Any unauthorized use or reproduction, in part or whole, of this manual is strictly prohibited.
- The information in this manual may be subject to change without notice in the future.
- Note that some of the descriptions in this manual may differ from the actual specifications due to improvements and revisions to this software.
- Copying Mimaki Engineering Co. Ltd. software described in this manual to other disks (except for the purpose of backup) or loading it to memory other than for the purpose of running it, is strictly prohibited.
- With the exception of what is provided in the warranty provisions, Mimaki Engineering Co. Ltd. does not assume any liability for any damage (including, but not limited to, the loss of profit, indirect damage, special damage, or other monetary damages) resulting from the use or inability to use this product. The same shall also apply to cases where Mimaki Engineering Co. Ltd. has been advised of the possibility of damage in advance. For example, we shall not be liable for any loss of media (work) caused by use of this product or indirect losses caused by products created using the media.

RasterLink is a trademark or a registered trademark of Mimaki Engineering Co., Ltd. in Japan and other countries.

Adobe, the Adobe logo, Acrobat, Illustrator, Photoshop, and PostScript are the trademarks or registered trademarks of Adobe Inc. in the United States and other countries.

Apple, Macintosh, Mac OS, and macOS are registered trademarks of Apple Inc.

Microsoft, Windows, Windows 7, Windows 8.1, Windows 10, and Windows 11 are registered trademarks or trademarks of Microsoft Corporation in the United States and other countries.

CorelDRAW is a trademark of Corel Corporation.

Other company names and product names described in this guide are trademarks or registered trademarks of their respective companies.





# About this guide

This guide describes how to install and use Mimaki RasterLinkTools.

## Notation used in this guide

- The buttons and items displayed in screens are enclosed in square brackets [ ], such as [OK] or [Open].
- RasterLink6Plus and RasterLink7 are referred to here simply as RasterLink.

## Symbols used in this guide

Description		
	Important	The "Important" symbol represents information which you must know before using Mimaki RasterLinkTools.
	General compulsory instructions	Indicates items that must be performed.
	Tip	The "Tip" symbol represents useful information to know.
	Reference Information	Indicates a reference page with related information. Click on the lettering to display the corresponding page.

## How to obtain this guide and related manuals

The latest versions of this guide and related manuals are available at:

- Mimaki official site (<https://mimaki.com/download/software.html>)

## Figures used in this manual

The explanation is used the figure of RasterLink7.

In this manual, when the procedure is the same in Adobe Illustrator and CorelDRAW, explanation is used the figure of Adobe Illustrator.

# Chapter 1 RasterLinkTools Overview and Setup




## **This chapter**

This chapter provides an overview of RasterLinkTools and describes the setup required to use it.

RasterLinkTools Function.....	6	Installation and Version Upgrade .....	8
System requirements .....	7	Installation and version upgrade procedure of RasterLinkTools for Illustrator for Windows ..	8
		Installation and version upgrade procedure of RasterLinkTools for Illustrator for Macintosh .....	11
		Installation and version upgrade procedure of RasterLinkTools for CorelDRAW .....	13
		When RasterLinkTools and FineCut are installed in CorelDRAW .....	15

# 1.1 RasterLinkTools Function

RasterLinkTools is an Adobe Illustrator plug-in tool to create image data for the following jobs in RasterLink6 and RasterLink7.

It must be installed separately from RasterLink. For more information on the installation procedure, refer to the  ["Installation and Version Upgrade"\(P. 8\)](#).



- The various data created using RasterLinkTools, except for special color jobs, cannot be used for other purposes with RasterLinkPro5 or earlier.

## ● Data that can be created

Job type	Supported printer	Supplementary manual name
Print & Cut	CJVseries, UCJVseries (RasterLink7 only), CG-AR	
White data	White ink-equipped machine	
Silver / Metallic color plate data	Silver ink-equipped machine	Metallic color guide
Multilayer Printing	UCJVseries	Multilayer Printing Guide
Watermark Print	UCJV330	Multilayer Printing Guide
Braille Printing	UJFseries	Braille Printing Guide
2.5D Printing	JFXseries, UJF-7151plusII, UCJV330	2.5D Texture Maker Guide



- For details information on the creation and output of print & cut data and data excluding white plate, refer to the supplementary manuals prepared for each printer. Please refer our official site for the manual download page for each printer.

# 1.2 System requirements

The table below shows the requirements to install and use RasterLinkTools.

## ● RasterLinkTools for Illustrator

	Windows	Macintosh
Computer	Pentium processor, IBM PC with a compatible processor, or compatible machine	Macintosh with Power PC or Intel CPU, Apple M1
Operating system	Microsoft Windows 7 (32 bit/64 bit) Microsoft Windows 8.1 (32 bit/64 bit) Microsoft Windows 10 (32 bit/64 bit) Microsoft Windows 11 (64 bit)	Mac OS X 10.3.9 to 10.11 macOS 10.12 to 14
Software	<ul style="list-style-type: none"> <li>Adobe Illustrator 8.0.1, 9, 10, CS, CS2, CS3, CS4, CS5, CS6, CC, CC2014, CC2015, CC2015.3, CC2017, CC2018, 2019, 2020, 2021, 2022, 2023, 2024</li> </ul>	<ul style="list-style-type: none"> <li>Adobe Illustrator 10, CS, CS2, CS3, CS4, CS5, CS6, CC, CC2014, CC2015, CC2015.3, CC2017, CC2018, 2019, 2020, 2021, 2022, 2023, 2024</li> </ul>
Other	Compliant with the operating environment required to use Adobe Illustrator	

## ● RasterLinkTools for CoreIDRAW

	Windows
Computer	IBM PC or compatible mounting Pentium processor or compatible CPU
Operating system	Microsoft Windows 7 (32 bit/64 bit) Microsoft Windows 8.1 (32 bit/64 bit) Microsoft Windows 10 (32 bit/64 bit) Microsoft Windows 11 (64 bit)
Software	<ul style="list-style-type: none"> <li>CoreIDRAW Graphics Suite 11, 12, X3, X4, X5, X6(32/64bit), X7(32/64bit), X8(32/64bit), 2017(32/64bit), 2018(32/64bit), 2019(32/64bit), 2020(32/64bit), 2021(64bit), 2022(64bit), 2023(64bit), 2024(64bit)</li> <li>CoreIDRAW Technical Suite X7(32/64bit), 2017(32/64bit), 2018(32/64bit), 2019(32/64bit), 2020(64bit), 2021(64bit), 2022(64bit), 2023(64bit), 2024(64bit)</li> </ul>
Other	Compliant with the operating environment required to use CoreIDRAW

The supported OS and supported software version depends on the RasterLink Tools version in use. Please refer our official site for details.

## ● Corresponding RasterLink Products

Data created using RasterLinkTools can be used with the following RasterLink products. However, some data are not supported depending on the printer.

For more information, refer to "RasterLinkTools Function".

- RasterLink6 Plus
- RasterLink7

# 1.3 Installation and Version Upgrade

- Important!** • RasterLinkTools supports RasterLink6 or later.

## Installation and version upgrade procedure of RasterLinkTools for Illustrator for Windows

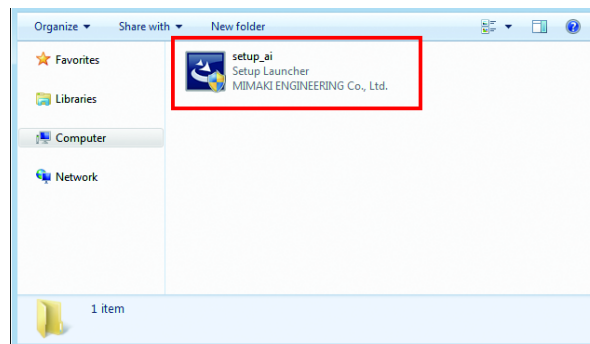
- 1 Go to our official website (<https://mimaki.com/download/software.html>) and download the installer of RasterLinkTools for Illustrator.

- Important!** • For Adobe Illustrator 64-bit version, download the installer of RasterLinkTools for Illustrator (64bit).

- 2 Save the installer on the PC where Illustrator is installed.

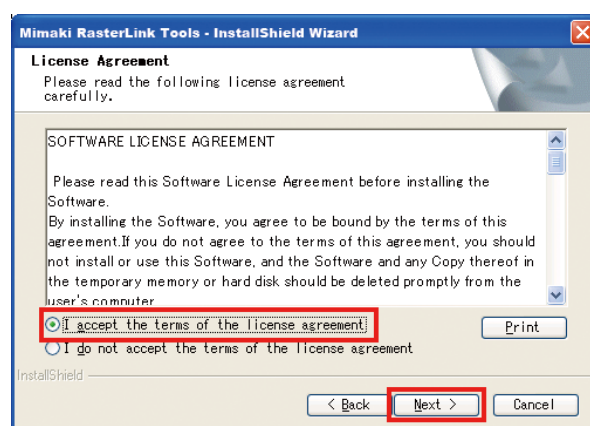
- 3 Double-click the installer.

- The installer is started.



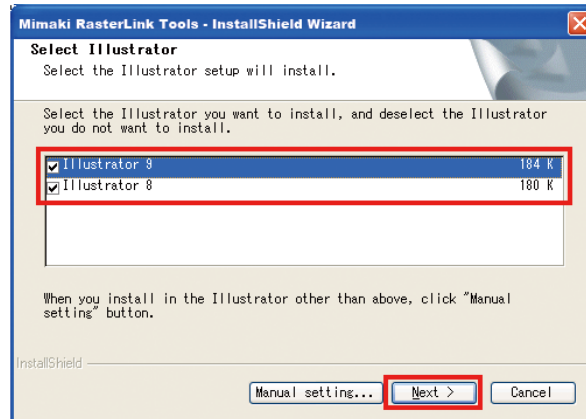
- 4 Click [Next].

- 5 Select [I accept the terms of the license agreement] and then click [Next].

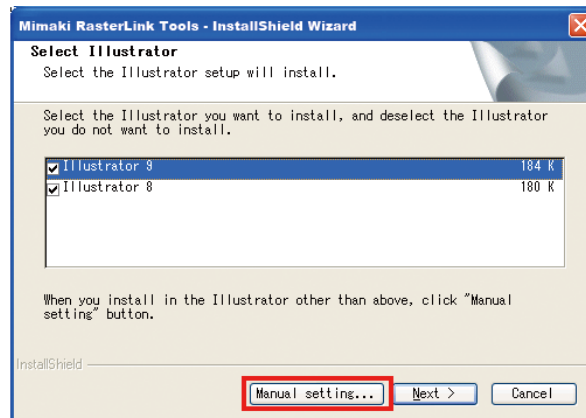




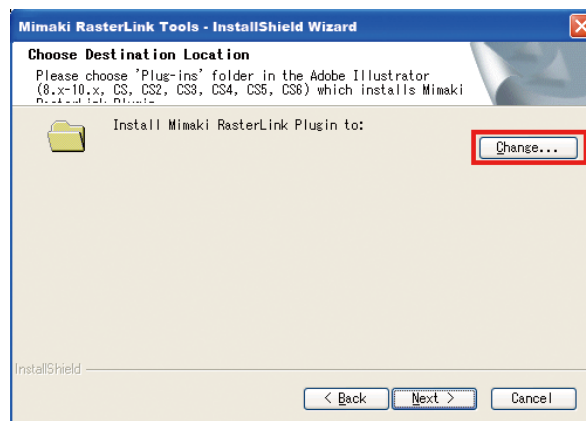
## 6 Select the check box or check boxes for Illustrator to which you want to install RasterLinkTools, and click [Next].



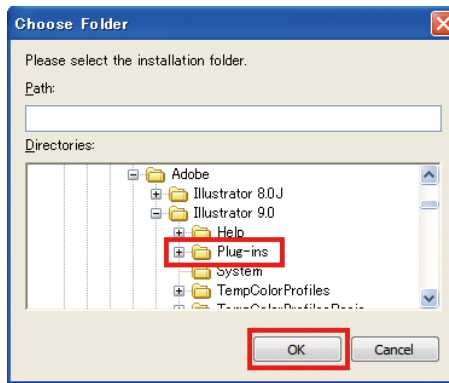
- If your Illustrator does not appear in the list
  - (1) Click [Manual setting].
    - The screen to specify the installation location appears.



- (2) Click [Change].



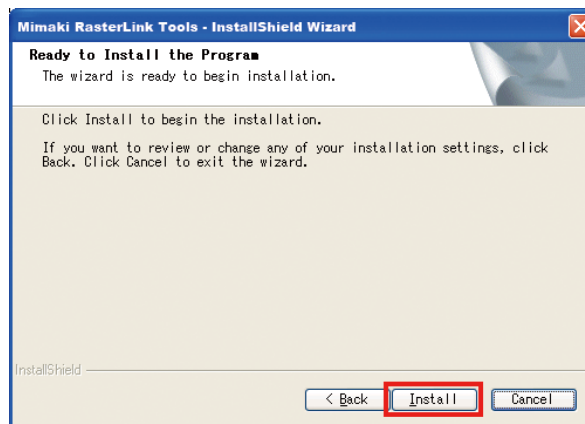
(3) Select the "Plug-ins" folder in the installation folder of your Illustrator and click [OK].



**7** Click [Next].

**8** Click [Install].

- The installation is started.

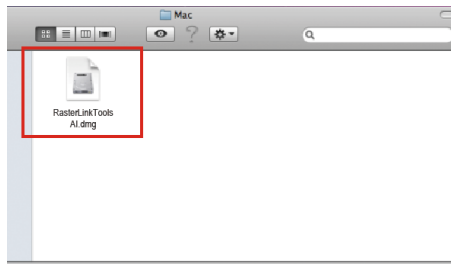


**9** Click [Finish].

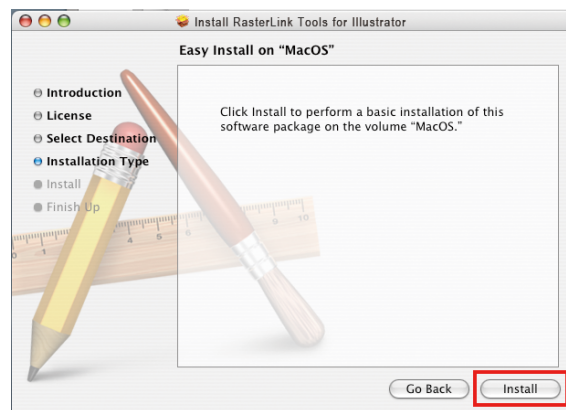
- The installation is now completed.

## Installation and version upgrade procedure of RasterLinkTools for Illustrator for Macintosh

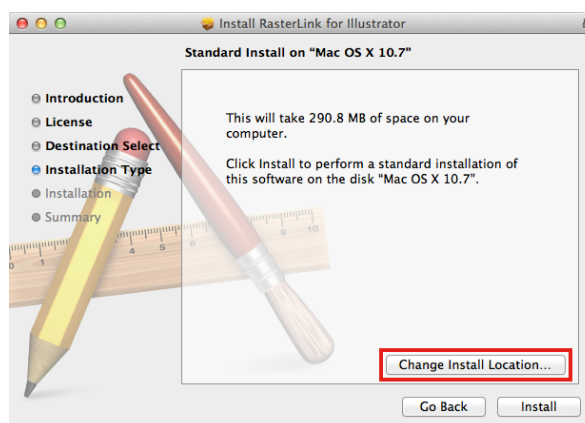
- 1 Go to our official website (<https://mimaki.com/>) and download the installer of RasterLinkTools for Illustrator.
- 2 Save the installer on the PC where Illustrator is installed.
- 3 Double-click the installer.
  - The installer is started.



- 4 Follow the instructions on the screen to click [Continue].
- 5 In the license agreement screen, click [I agree to].
- 6 Click [Install].

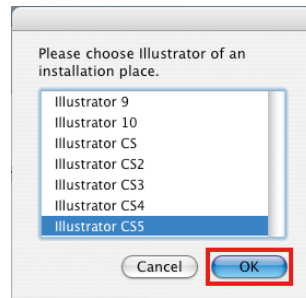


- If you cannot find Illustrator to which the tool is installed in the disk displayed in this screen, click [Change Install Location] to change the disk.
- After the selection, click [Install].



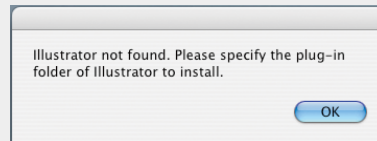
## 7 Select the version of Illustrator at the installation location, and click [OK].

- The installation is started.



If you cannot find Illustrator after selecting it

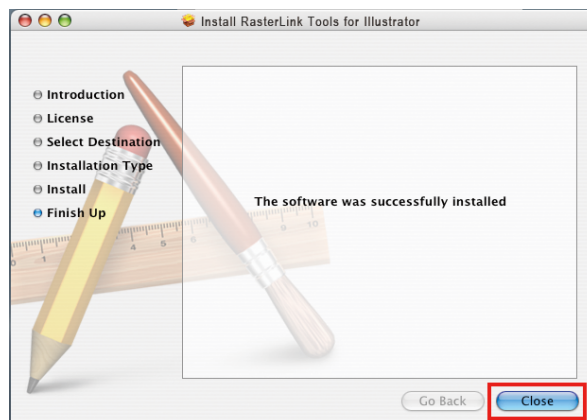
- MacOS10.6 or earlier  
An error message is displayed.



- MacOS10.7 or later  
Select the [Plug-ins] folder, then click [Select].

## 8 Click [Close].

- The installation is now completed.



## Installation and version upgrade procedure of RasterLinkTools for CoreIDRAW

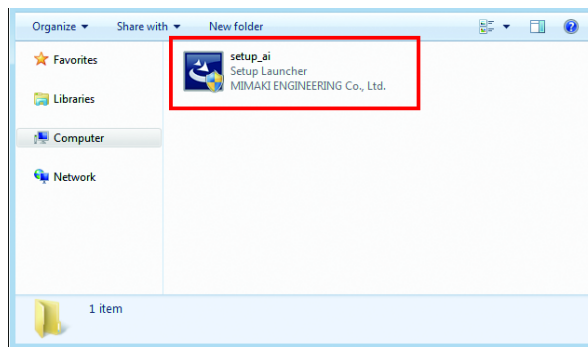
- 1 Go to our official website (<https://mimaki.com/download/software.html>) and download the installer of RasterLinkTools for CoreIDRAW.

**Important!** • For CoreIDRAW 64-bit version, download the installer of RasterLinkTools for CoreIDRAW (64 bit).

- 2 Save the installer on the PC where CoreIDRAW is installed.

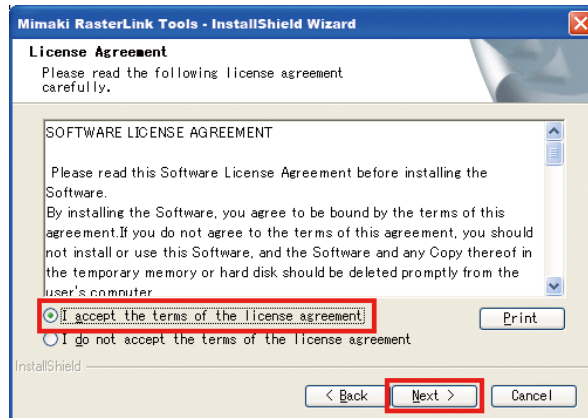
- 3 Double-click the installer.

- The installer is started.

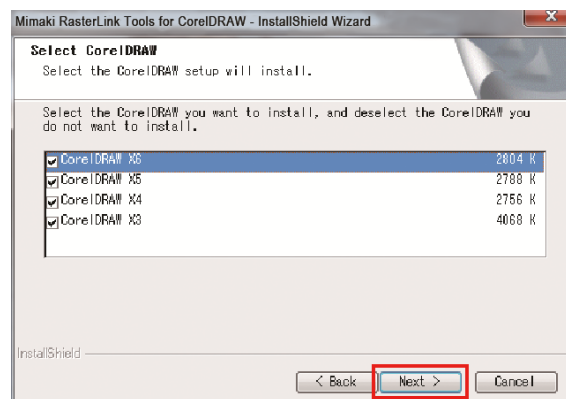


- 4 Click [Next].

- 5 Select [I accept the terms of the license agreement] and then click [Next].



- 6 Select the check box or check boxes for CoreIDRAW to which you want to install RasterLinkTools, and click [Next].

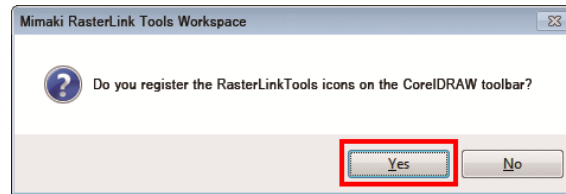


**7** Click [Install].

- The installation is started.

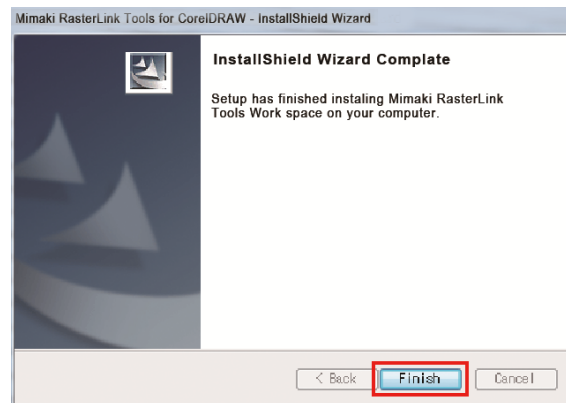
**8** If you want to add the RasterLinkTools icon on the CorelDRAW toolbar, then click [Yes].

- If you do not, click [No].



**9** Click [Finish].

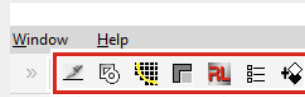
- The installation is now completed.



## When RasterLinkTools and FineCut are installed in CorelDRAW

**Important!**

- If you install RasterLinkTools in the PC where FineCut has already been installed, the FineCut icons disappear from the toolbar and the RasterLinkTools icons are displayed instead.



- RasterLinkTools and FineCut are registered as distinct workspaces. If you want to use the tool that is not visible, you need to switch a workspace.

### How to switch the workspace

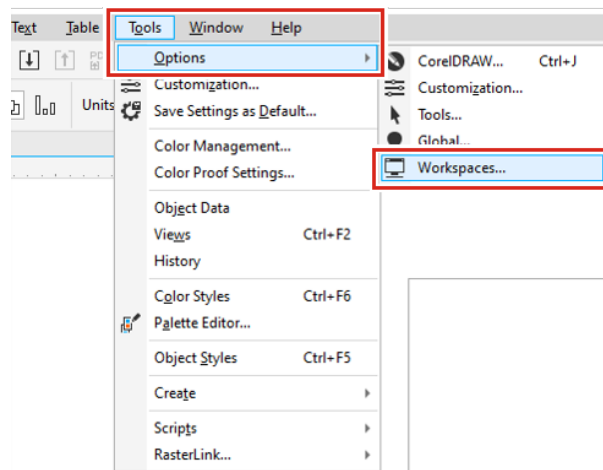
This section describes how to switch from RasterLinkTools to FineCut/Coat.

#### ● Switching using [Tools] menu (with CorelDRAW 2019 or later)

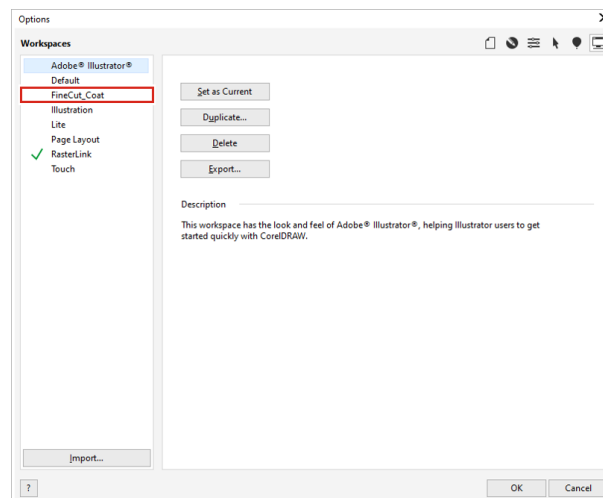
The procedure will differ if using versions older than CorelDRAW 2019. Check your CorelDRAW specifications.

#### 1 Select [Tools] - [Options] - [Workspaces].

- The [Options] window appears.

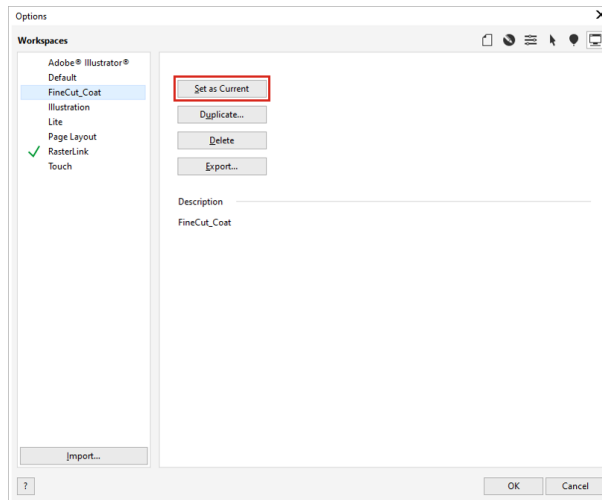


#### 2 Select [FineCut\_Coat] on the [Options] window.

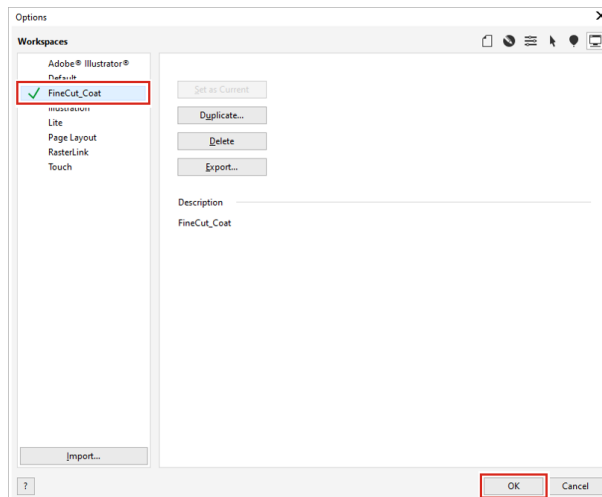


1

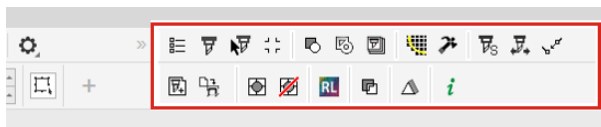
### 3 Click [Set as Current].



### 4 Confirm the workspace has been changed to [FineCut\_Coat], then click [OK].



- FineCut/Coat appears in the toolbar.



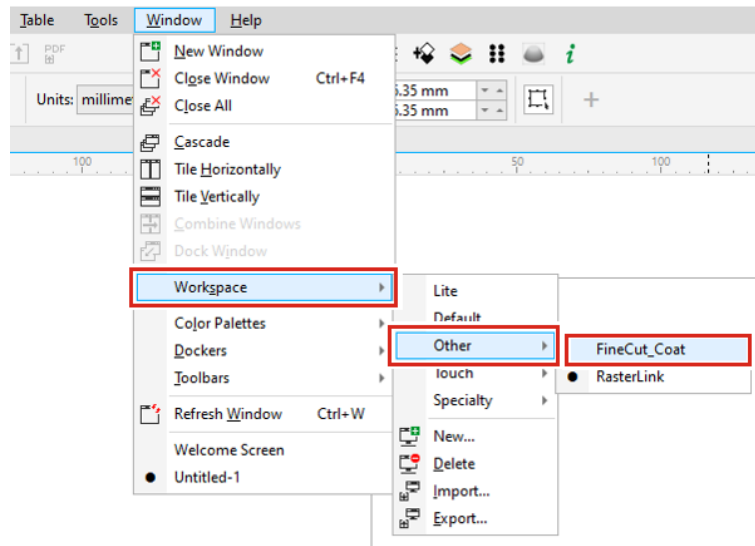
- If you want to bring them back to the RasterLinkTools icons, follow the same steps and select RasterLink.

### ● Switching using [Windows] - [Workspace] menu (with CoreIDRAW 2017 or later)

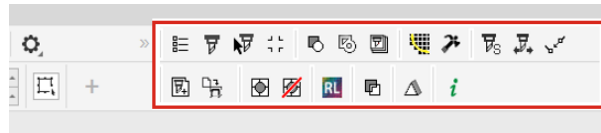
The procedure may differ if using versions older than CoreIDRAW 2017. Check your CoreIDRAW specifications.



# 1 Select [Window] - [Workspace] - [Other] - [FineCut\_Coat].



- FineCut/Coat appears in the toolbar.



- If you want to bring them back to the RasterLinkTools icons, follow the same steps and select RasterLink.



# Chapter 2 RasterLinkTools Operations



## **This chapter**

Describes the menu and operations of RasterLinkTools in detail.

RasterLinkTools Screen Layout .....	20	RasterLinkTools Operations .....	25
		Create a Cut Path .....	25
		Create a Cut Path Around an Object .....	26
		Extract an Object Outline .....	29
		Create Image Data for a Special Color Job .....	32
		Save Data for RasterLink .....	37
		Creates image data for Kebab Taper printing .....	39
		Update the RasterLinkTools Settings .....	42
		Check for RasterLinkTools Updates .....	42

## 2.1 RasterLinkTools Screen Layout

### ● How to display [Mimaki RasterLink] window

Select [Window] - [Mimaki RasterLink] in Adobe Illustrator.

- The [Mimaki RasterLink] window opens.



### ● In the case of CoreIDRAW:


A tool icon will be displayed when the RasterLinkTools is installed.

**Important!**


- If Mimaki's FileCut cutting plug-in was installed after installing RasterLinkTools, the tool icon for RasterLinkTools will be hidden. For details, refer to [☞ "When RasterLinkTools and FineCut are installed in CoreIDRAW"\(P. 15\)](#).

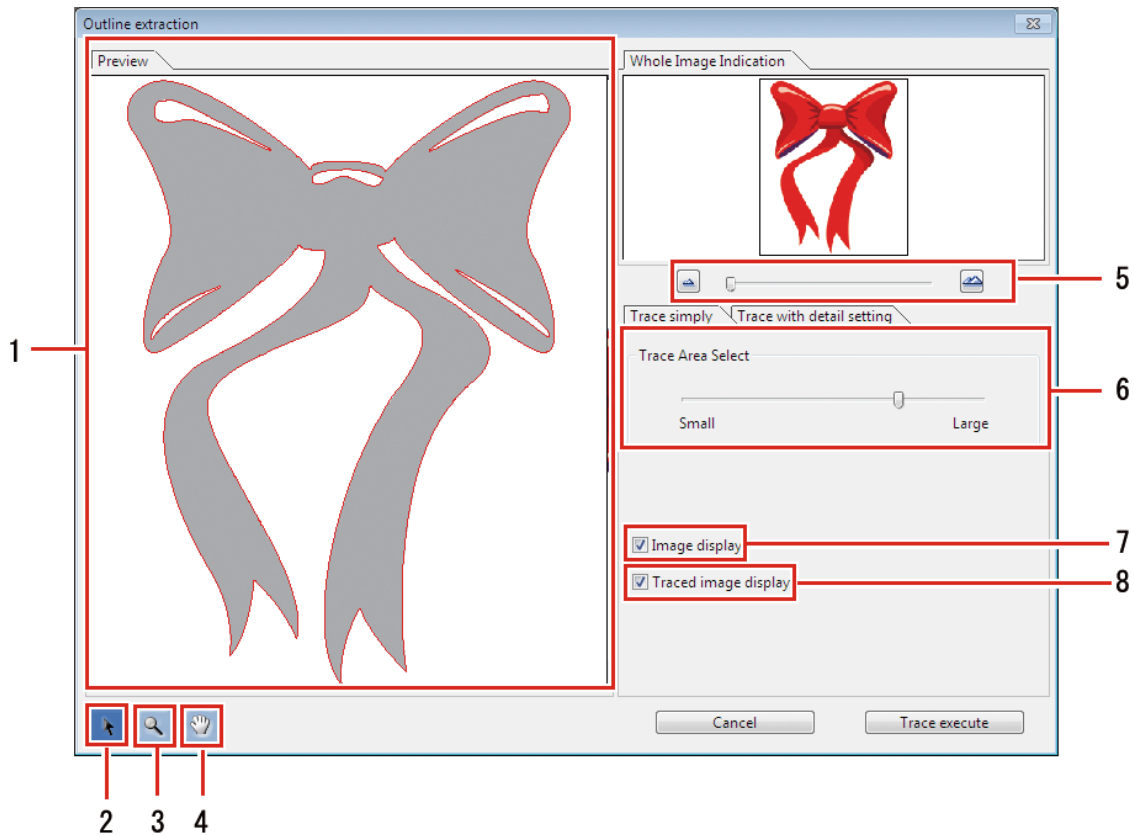
### ● Menu

Button	Function	Description
	Convert Cut Line	Converts the selected object to a spot color for the cut path.
	Frame Extraction	Creates a frame for the selected object. (☞ P. 26)
	Outline extraction	Creates a bitmap image outline. (☞ P. 29)
	Subtract from shape area	Crops a bitmap image with a specified vector object, and then creates the cropped image and another cropped image on a separated layer. (☞ P. 32)
	Output to RasterLink	Save data for RasterLink. (☞ P. 37)
	Setting	Sets Special Color Layer Print. (☞ P. 42)
	About RasterLinkTools	RasterLinkTools update information is displayed. (☞ P. 42)
	Multilayer Printing - Create the layers	Creates a white layer and a black layer between the front and back layers. For more information, refer to the separate "Multilayer Printing Guide".
	Multilayer Printing	Sends multiple layers that have been created with Multilayer Printing - Create the layers function to RasterLink. For more information, refer to the separate "Multilayer Printing Guide".
	Braille RLOutput	Sends the image and print settings for Braille printing to RasterLink. For more information, refer to the separate "Braille printing Guide".
	2.5D RLOutput	Sends the image and overprint settings to RasterLink. For more information, refer to the separate "2.5D Texture Maker Guide".
	Watermark Print	By overprinting a color job and a special color job printed with the image to be shown transparency, data can be created that allows the special color job image visible transparently when light is applied from the back of the image.

Button	Function	Description
		For more information, refer to the separate "UCJV330 Multilayer Printing Guide".
	Kebab Taper Printing	Kebab system creates image data for printing on tapered cylinders. (☞ P. 39)

### ● [Outline extraction] screen - [Trace simply] tab

After clicking a bitmap image, select [File] - [RasterLink] - [Outline extraction] or click [Window] - [Mimaki RasterLink] -  icon to display the [Outline extraction] screen.



#### 1 [Preview] tab

- Displays the image (monochrome) and tracing results.

#### 2

- Moves the entire object displayed.

#### 3

- Enlarges and reduces the preview display size.
- Clicking on the preview enlarges the display size.
- Clicking while pressing the [Alt] key (Windows) or [Option] key (Macintosh) reduces the preview size.

**4** 

- Modifies the area in which the object is displayed.

**5** 

- Alters the preview display magnification.

**6** **[Trace Area Select]**

- Drag the slider to select the part to be traced.
- Moving the slider toward [Small] traces a narrower area.
- Moving the slider toward [Large] traces a wider area.

**7** **[Image display]**

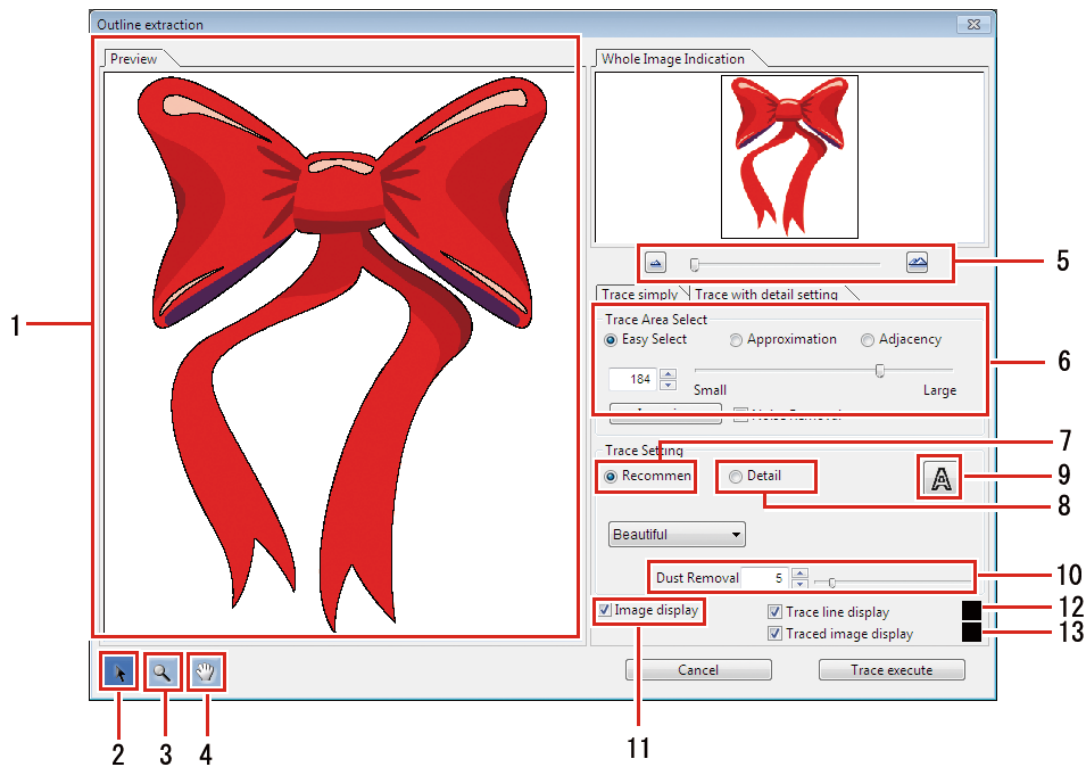
- Sets whether or not to display the original image in the preview.
- When this is selected, the trace area selected in [Trace Area Select] is shown in gray.
- This allows you to check the lines to be extracted and to compare the trace results against the original image.

**8** **[Traced image display]**

- Sets whether or not to display the trace results in the preview.

## ● [Outline extraction] screen - [Trace with detail setting] tab

Select [File] - [RasterLink] - [Outline extraction] or click [Window] - [Mimaki RasterLink] -  icon to display the [Outline extraction] screen.



### 1 [Preview] tab

- Displays the image and trace results.

### 2

- Moves the entire object displayed.

### 3

- Enlarges and reduces the preview display size.
- Clicking on the preview enlarges the display size.
- Clicking while pressing the [Alt] key (Windows) or [Option] key (Macintosh) reduces the preview size.

### 4

- Modifies the area in which the object is displayed.

### 5

- Alters the preview display magnification.

### 6 [Trace Area Select]

### 7 [Trace Setting (recommended setting)]

### 8 [Trace Setting (detail setting)]

### 9

- Sets whether or not to display the trace results in the preview.

## **10 [Dust Removal]**

- Removes flecks not exceeding the size set in points.

## **11 [Image display]**

- When this is selected, the image is displayed in the preview.

## **12 [Trace line display]**

- When this is selected, the trace area is displayed in the preview in the color specified.

## **13 [Traced image display]**

- When this is selected, the trace results are displayed in the preview in the color specified.

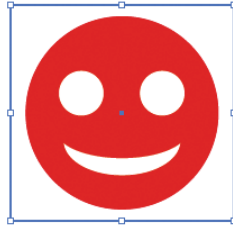


## 2.2 RasterLinkTools Operations

### Create a Cut Path

Creates a cut path for print & cut using RasterLink.

- 1 Select the path to be cut in Adobe Illustrator.



- 2 Click [Window] - [Mimaki RasterLink] - [ ] icon.

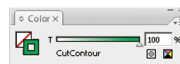
- Or select [File] - [RasterLink] - [Convert Cut Line].



- In the case of CoreIDRAW:  
Select [RasterLink] - [Convert Outline] from the [Tools] menu.



- The color of the path to be cut will be set to the spot color named "CutContour" and converted to no filling.



When creating cut paths using CoreIDRAW, be sure to use "Curve". This function cannot be used unless "Curve" is used.

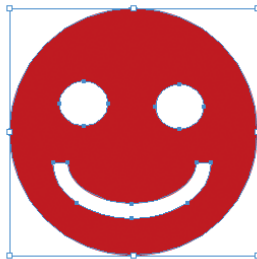
- Convert to curves using [ConvertToCurves] or a similar function in CoreIDRAW.

## Create a Cut Path Around an Object

Create a cut path following the perimeter of an object.

Cut paths can also be created to cut out white space (internal areas) inside the object.

### 1 Select all objects for creating the cut path in Adobe Illustrator.



### 2 Click [Window] - [Mimaki RasterLink] - [Frame Extraction] icon.

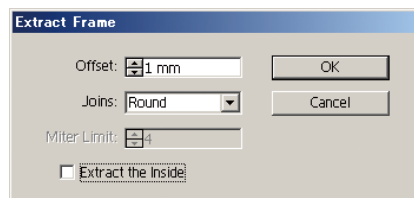
- Or select [File] - [RasterLink] - [Frame Extraction].
- The [Frame Extraction] dialog appears.



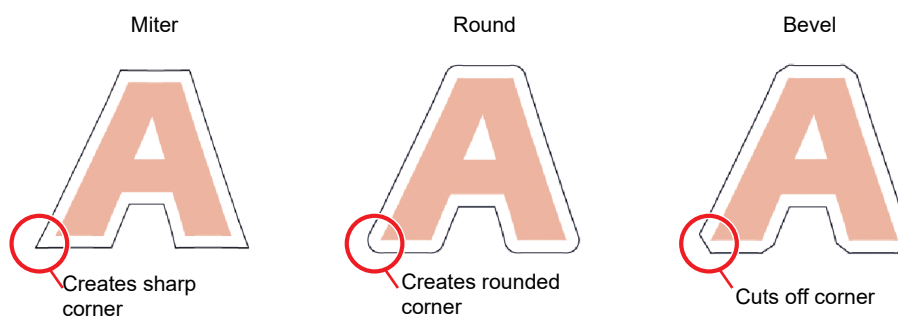
- In the case of CorelDRAW:  
Select [RasterLink] - [Frame Extraction] from the [Tools] menu.



### 3 Set the cut path in the [Frame Extraction] dialog.

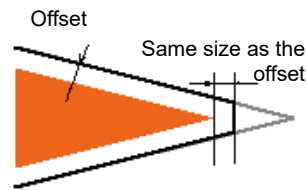


- [Offset]:  
Sets the distance from the object to the cut path.
- [Joins]:  
Select from one of three styles: "Miter", "Round", or "Bevel".

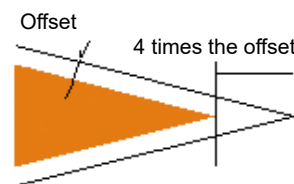


- [Miter Limit]:  
Sets the angle ratio when "Miter" has been selected.

- When Miter Limit is set to 1  
The cut path angle is cut off at a distance from the object corner corresponding to the offset.

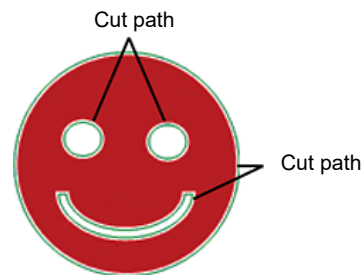


- When Miter Limit is set to 4  
The cut path angle is extended to a distance corresponding to four times the offset from the object corner.  
In this diagram, the cut path corner is not cut off. The corner shape will remain unchanged for any Miter Limit set to 4 or greater.



- [Extract the Inside]:  
When this is selected, cut paths are created to cut out white space (internal areas) inside the object as well as outside the object.

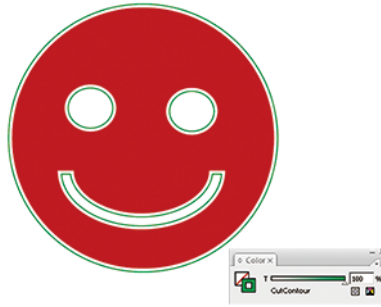
- On  
Cut paths are also created for white areas inside the object.



- Off  
Cut paths are created only on the perimeter of the object.



The color of the path to be cut will be set to the spot color named "CutContour" and converted to no filling.



- The initial color settings for created path lines are as follows.
  - Name: CutContour
  - Color type: Special
  - Color: Cyan 100%, Magenta 0%, Yellow 100%, Black 0%
- Other characters can be included after "CutContour" (like CutContourCut1 and CutContourHalf). This enables multiple paths to be created with different cutting conditions. Single-byte alphanumeric characters must be used for the characters added after "CutContour".
- For more information on the spot color setting procedure, refer to "Method for setting spot color in Adobe Illustrator" in the separate "RasterLink Reference Guide".

## Extract an Object Outline

Select the outline of raster objects such as BMP, JPEG, and TIFF images, then create paths. Colors can be set to extract only outlines for areas of the same color.

### ● Trace simply

Extracts outlines for raster objects.

#### 1 Select the objects for extracting outlines in Adobe Illustrator.



#### 2 Click [Window] - [Mimaki RasterLink] - [Grid] icon.

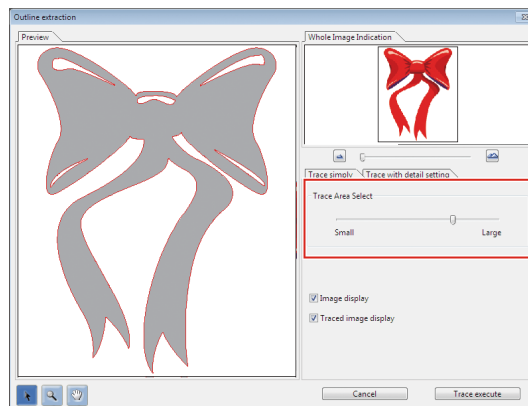
- Or select [File] - [RasterLink] - [Outline extraction].
- The [Outline extraction] dialog appears.



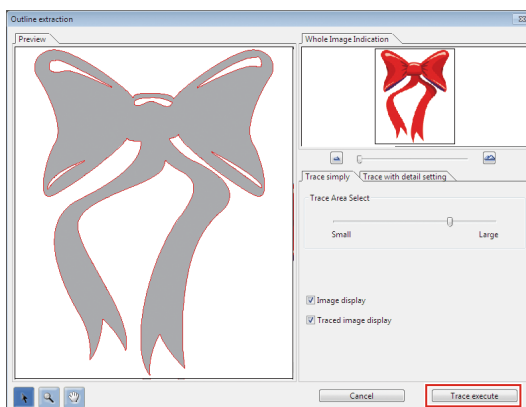
#### 3 Select the [Trace simply] tab in the [Outline extraction] dialog.

#### 4 To alter the trace area, drag the Trace Area Select slider.

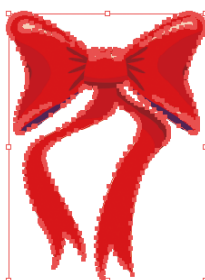
- This alters the trace area.
- The trace results are displayed in the preview.



## 5 Click [Trace execute].



- A path is created in [RL Trace Layer].



- The paths created can be used in print & cut by using ["Create a Cut Path Around an Object"\(P. 26\)](#).
- Different cutting conditions can be set for the spot color name.
- Each time the button is clicked, a path is created on a new layer in the sequence [RL Trace Layer 1], [RL Trace Layer 2], etc.

### ● Trace with detail setting

Extracts a raster object outline using advanced settings.

This should be used for more detailed setting of objects traced using simple tracing or when tracing special colors or area outlines.

## 1 Select the objects for extracting outlines in Adobe Illustrator.

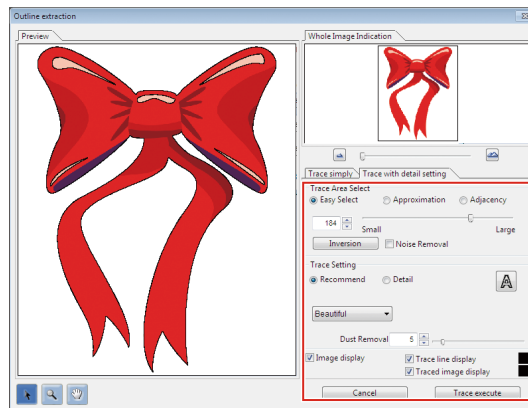


## 2 Click [Window] - [Mimaki RasterLink] - [Grid] icon.

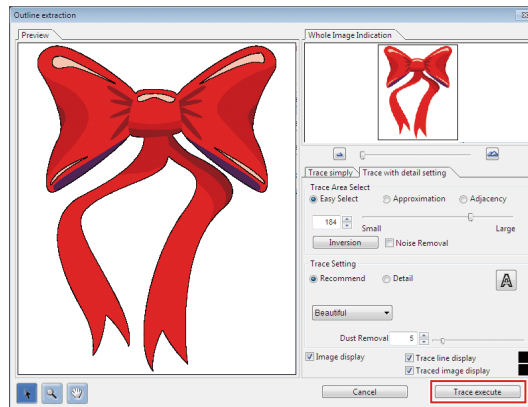
- Or select [File] - [RasterLink] - [Outline extraction].
- The [Outline extraction] dialog appears.



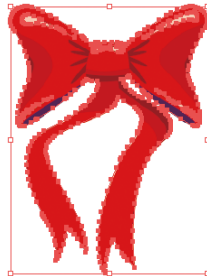
- 3 Select the [Trace with detail setting] tab in the [Outline extraction] dialog.
- 4 Set the detailed tracing method in the Trace Area Select and trace settings.




- 5 Click [Trace execute].



- A path is created in [RL Trace Layer].



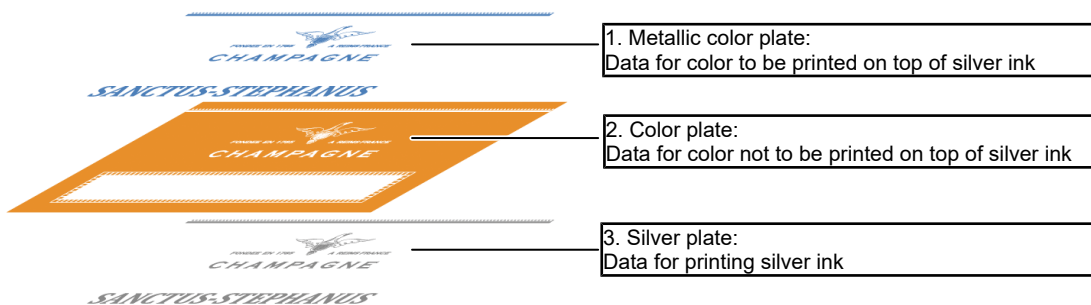
- The paths created can be used in print & cut by using  "Create a Cut Path Around an Object"(P. 26).
- Different cutting conditions can be set for the spot color name.
- Each time the button is clicked, a path is created on a new layer in the sequence [RL Trace Layer 1], [RL Trace Layer 2], etc.

# Create Image Data for a Special Color Job

Creates image data for special color jobs using Adobe Illustrator.

● **Example: Create data for printing metallic colors.**

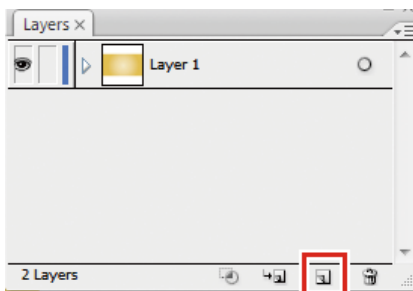
When part of the print data is to be printed using SS21 silver ink, create the following three different plates:



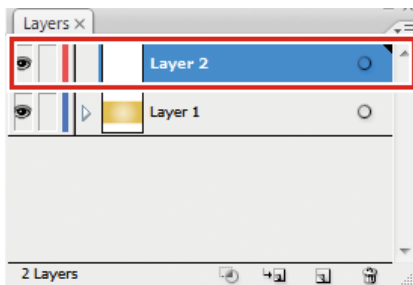
The RasterLinkTools die-cutting function allows the data for these three different plates to be created easily.

**1 Create a layer for the silver plate on top of the print data layer.**

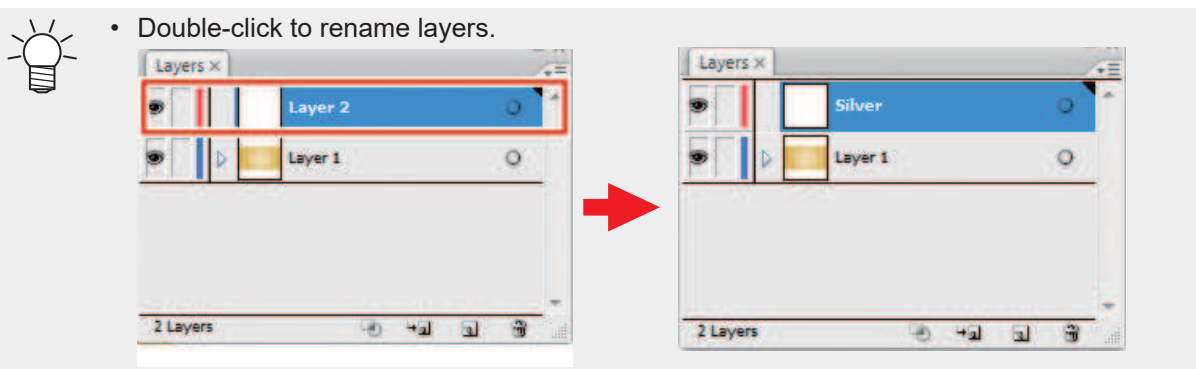
- Click the [Create New Layer] icon at the bottom right of the layer tab.



- A new layer appears.



- Double-click to rename layers.





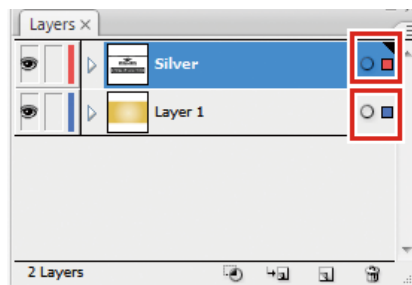
## 2 Create a path for the area to be printed with silver ink inside the layer for the silver plate.



**Important!**

- The area for printing with silver ink must be made into a path. If image data exists, this will be excluded from die-cutting.
- The path for the area for printing with silver ink must be set to the following parameters:
  - Paint: K100
  - Line: No paint

## 3 Select the print data layer and silver plate layer while pressing [Shift].



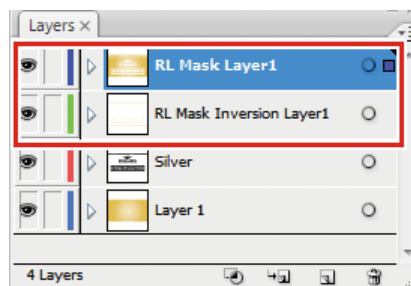
**Important!**

- The displayed layers will be die-cut. Layers that are not to be die-cut should be hidden.

## 4 Click [Window] - [Mimaki RasterLink] - [RL] icon.



- [RL Mask Layer 1] (metallic color plate job data) and [RL Mask Inversion Layer 1] (color plate job data) are created.



- For more information, refer to the "Metallic Color Printing Guide" for the corresponding printer.

- A special color is printed over the entire image.

If the special color job was created with [Valid Pixel] selected in [Special plate], special color ink will not be printed in white areas (such as the letter outlines and waves in the example below) within the job. If these areas are printed, the media bottom will be visible in the white areas.



In cases like this, use RasterLinkTools to create special color image data and print special color ink over the entire job.

- 1 Open the image data in Adobe Illustrator.
- 2 Select all objects.



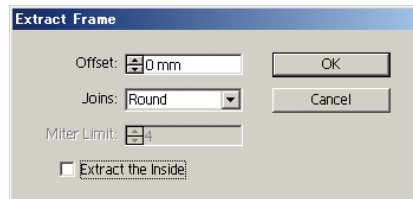
### 3 Click [Window] - [Mimaki RasterLink] - icon.

- Or select [File] - [RasterLink] - [Frame Extraction].
- The [Frame Extraction] dialog appears.



### 4 Set the path as follows in the [Frame Extraction] dialog:

[Offset] : 0 mm  
[Extract the Inside] : Off



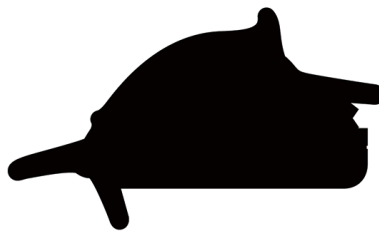
### 5 Click [OK].

- A path is created surrounding all of the objects.



### 6 Select the path created in Step 5, then alter the colors as follows:

Line : None  
Paint : Black 100%



### 7 Click [Window] - [Mimaki RasterLink] - icon.

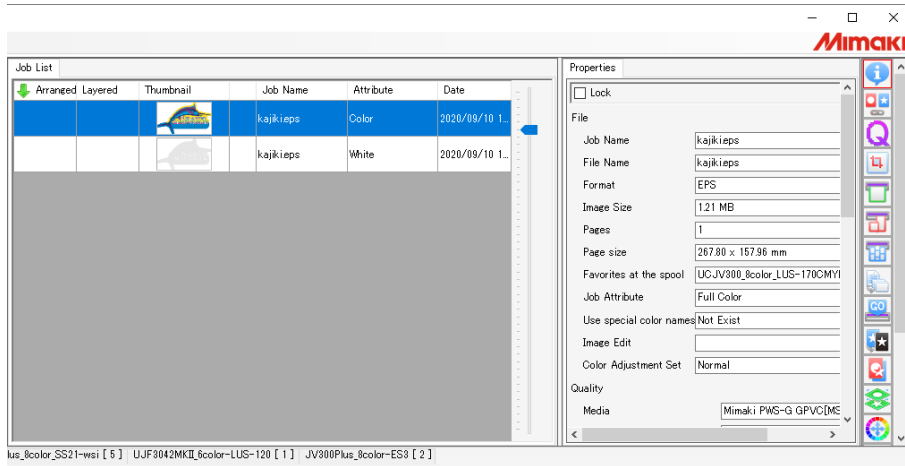
- Or select [File] - [RasterLink] - [Output to RasterLink].
- The [Save] dialog appears.

### 8 Enter the destination and file name in the [Save as a new file] dialog, then click [Save].



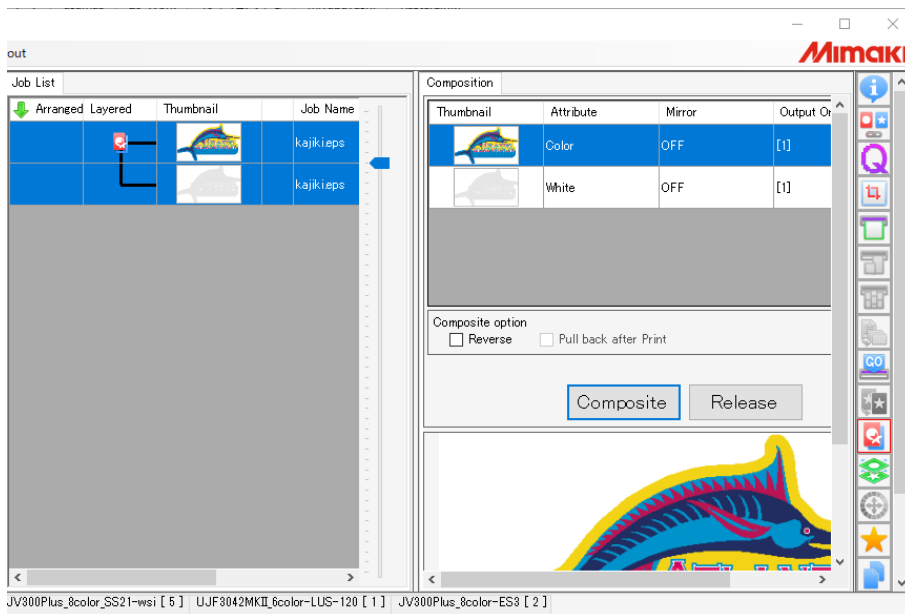
- Saving a file in a hot folder automatically imports it to RasterLink.

- 9 Select [Job Attribute] - [Mono Color] on the RasterLink [Properties] tab to replace the color with a special color.



- For more information, refer to "Properties" in the separate "RasterLink Reference Guide".

- 10 Select the job and color plate set in Step 9 in [Job List], then click [Composite] on the [Composition] tab.



- For more information, refer to "Composition" in the separate "RasterLink Reference Guide".

- 11 Click [Start] on the [Execute] tab.

- Printing is performed.
- The special color will be printed even in white areas of the original image data.



- For more information, refer to "Execution" in the separate "RasterLink Reference Guide".

## Save Data for RasterLink

### 1 Click [Window] - [Mimaki RasterLink] - [RL] icon.

- Or select [File] - [RasterLink] - [Output to RasterLink].
- The [Save] dialog appears.



- In the case of CoreIDRAW:  
Select [RasterLink] - [Output to RasterLink] from the [Tools] menu.



### 2 Enter the destination and file name in the [Save as a new file] dialog, then click [Save].



- Saving a file in a hot folder automatically imports it to RasterLink.



File names and folder names are subject to the following restrictions:

- Adobe Illustrator CS for Macintosh: File names can be up to two single-byte alphanumeric characters.
- Adobe Illustrator CS6 or later for Macintosh: Only single-byte alphanumeric characters can be used for file names.

### 3 Click [OK] in the [EPS Options] dialog.

- An eps file is saved.

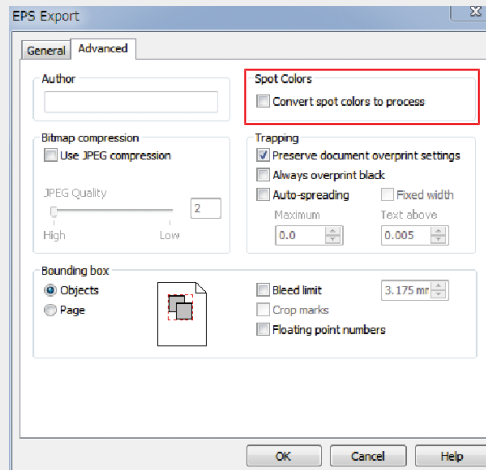


- Data saved using [Output to RasterLink] is saved in the eps format.

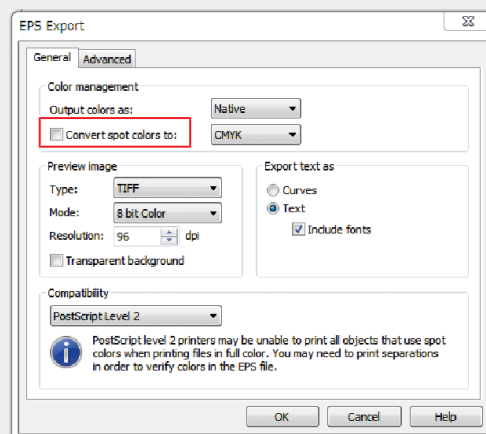


In the case of CorelDRAW:

- CorelDRAW X3, X4  
Remove the check mark from Spot Colors [Convert spot colors to process] in the [Advanced] tab.



- CorelDRAW X5, X6  
Remove the check mark from Spot Colors [Convert spot colors to:] in the [General] tab.



**Important!** [Output to RasterLink] outputs all data to ensure that the print position is not misaligned when multiple plates are combined and printed using RasterLink. The layers and object areas hidden on Adobe Illustrator will form margins. If you do not wish to create margins, send the data to RasterLink using one of the following methods.

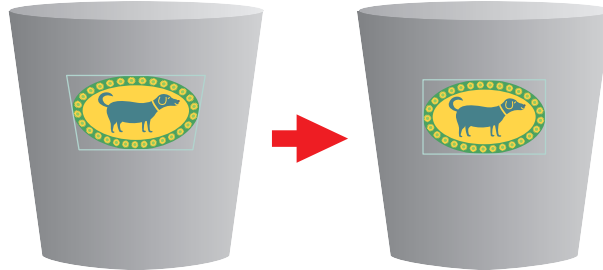
- Delete the layers and objects hidden on Adobe Illustrator before executing [Output to RasterLink].
- Save in eps format using the Adobe Illustrator save function without using [Output to RasterLink], then manually place data in a hot folder.

For more information on operations after importing to RasterLink, refer to the separate "RasterLink Reference Guide".

## Creates image data for Kebab Taper printing

Supported System	Kebab HS
Supported RasterLink	RasterLink7 v.3.2.0 or later
Supported Mimaki driver	V.5.9.0 or later

This function can be used in Kebab printing when printing on the side of a cylinder with tilted toward the top (tapered shape). When printing with an processed image for the taper, the image will appear natural from the front.



### Important!

- The width of design should be one sixth or less of the circumference of large circle. If the width is larger than this, the printed material may appear deformed. If the width is too large when this function is executed, the message "It exceeds the recommended width of the design. (recommended width: within \*\* mm) " will be displayed. Change the recommended width within the width displayed in the message.

### Important!

This function cannot be used in the following conditions.

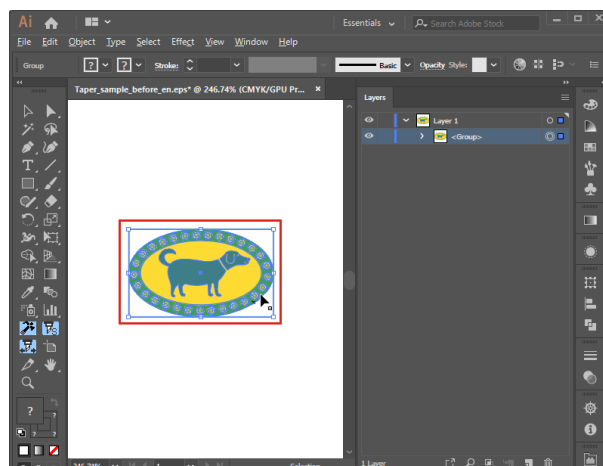
- (1) For Adobe Illustrator
  - Multiple artboards
  - No embedded image data (Linked file status)
- (2) For CorelDRAW
  - Included Mesh Fill Object
  - Locked design data

### Important!

The Kebab - Processing for tapered shape cannot be performed correctly in the following cases.

- (1) CorelDRAW X7.6 (version 17.6.0.1021) or below
- (2) The following design data is included in CorelDRAW X7, CorelDRAW X8, or CorelDRAW 2017.
  - Bitmap
  - Bevel effect

## 1 Select the design to be processed.



**2** Click [Window] - [Mimaki RasterLink] - [🍷] icon.

- Or select [File] - [RasterLink] - [Kebab - Processing for tapered shape].

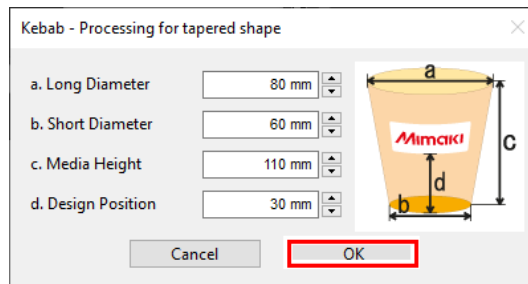


- In CoreIDRAW, select [RasterLink] - [Kebab - Processing for tapered shape] from the [Tools] menu.

- The [Kebab - Processing for tapered shape] dialog appears.



**3** Input the value of various items in the [Kebab - Processing for tapered shape] dialog.



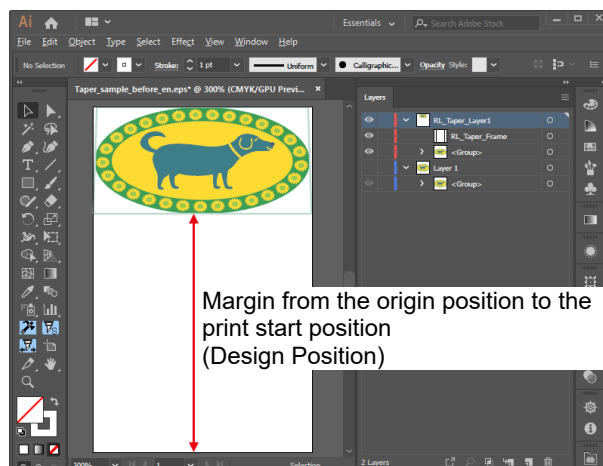
- |                    |  |
|--------------------|--|
| 1. Long Diameter   | Input the large side diameter.   |
| 2. Short Diameter  | Input the small side diameter.   |
| 3. Media Height    | Input the media height.  |
| 4. Design Position | Input the margin from the origin position to the print start position. |

**4** Design Position Input the length from the Kebab origin set in the printer to the print start position.

- Important!** • The design position should be measured by the printer. For more information on the measurement procedure, refer to "Setting the start position" in the Kebab HS Operation manual.

**5** Click [OK].

- The image will be processed for taper.





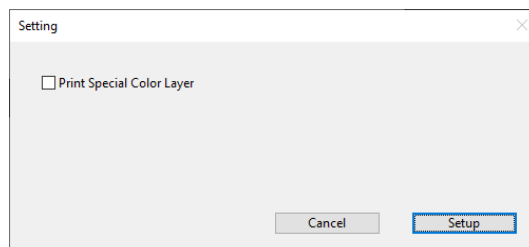
- 6** Select [File] - [Save As...].
  - The [Save As...] dialog appears.
- 7** Enter the destination and file name, then click [Save].
  - Select "Adobe PDF (\*.PDF)" as the [File type] to save.
- 8** For further procedure, refer to "Creating data" in the Kebab HS Operation manual.

## Update the RasterLinkTools Settings

- Adobe Illustrator CS or later
- CorelDRAW X5 or later

### 1 Click [Window] - [Mimaki RasterLink] - [ ] icon.

- Or select [File] - [RasterLink] - [Setting].



### 2 After setting, click [Settings] to close the screen.

#### ● [Print Special Color Layer]

When ON, image data using colors included in the following swatch libraries will be created separately for color and special color jobs and then automatically composited when saving to the RasterLink hot folder using [Output to RasterLink].

- Mimaki RasterLink Library
- Mimaki SS21 Metallic Color Library
- Mimaki SS21 Metallic Orange Color Library

## Check for RasterLinkTools Updates

Connect to the Internet, and check for RasterLinkTools update information.

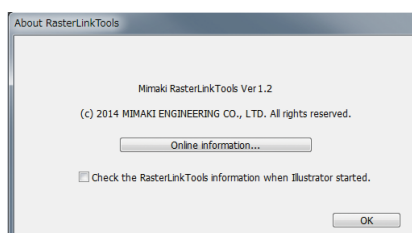
### 1 Click [Window] - [Mimaki RasterLink] - [i] icon.

- Or select [File] - [RasterLink] - [About RasterLinkTools].
- The [About RasterLinkTools] dialog appears.



### 2 Click [Online information...].

- RasterLinkTools update information is displayed.
- Selecting the [Check the RasterLinkTools information when Illustrator started.] checkbox automatically fetches information when Adobe Illustrator starts up, then displays the RasterLinkTools update information.



## **RasterLinkTools Guide**

---

---

July, 2024

MIMAKI ENGINEERING CO.,LTD.  
2182-3 Shigeno-otsu, Tomi-shi, Nagano 389-0512 JAPAN

---

---

D203627-17-31072024

