

UJF-7151plus / UJF-7151 plusII / UJF-3042MkII / UJF-3042MkII e / UJF-3042MkII EX / UJF-3042MkII EX e / UJF-6042MkII / UJF-6042MkII e / JFX200-1213EX / JFX200-2513EX

Braille Print Guide

This guide explains how to print braille using UV curable ink LH100/ELH-100 (Clear, Primer) on UJF-7151plus / UJF-7151 plusII / UJF-3042MkII / UJF-3042MkII e / UJF-6042MkII / UJF-6042MkII e, and The following explains how to print braille on JFX200-1213EX / JFX200-2513EX using UV curable ink LH-100 (Clear, Primer).Read this guide thoroughly before use.

Note

- It is strictly prohibited to write or copy a part or whole of this document without our approval.
- This document has been carefully prepared for your easy understanding, however, please do not hesitate to contact a distributor in your district or our office if you have any inquiry.
- Description contained in this document are subject to change without notice for improvement.
- Copying the Mimaki Engineering Co. Ltd. software described in this guide to other disks (except for backup purposes) or loading it to memory except for the purpose of running it, is strictly prohibited.
- Due to improvement or change of software, the description of this document could be partially different in specification, for which your understanding is requested.
- With the exception of what is provided for in the warranty provisions of MIMAKI ENGINEERING CO., LTD., we do not assume any liability against the damages (including but not limited to the loss of profit, indirect damage, special damage or other monetary damages) arisen out of the use or failure to use of this product. The same shall also apply to the case even if MIMAKI ENGINEERING CO., LTD. had been notified of the possibility of arising damages in advance. As an example, we shall not be liable for any loss of the media made using this product or indirect damages caused by the product made using this media.
- You can also download the latest operation manual from our website.

Notations used in this document

- Items and buttons displayed in menus and on screens are marked with square brackets ([]) as in [File].
- RasterLink6Plus and RasterLink7 are referred to as RasterLink in together.

Screen image used in this document

- The explanation is based on the screen image of RasterLink6Plus as an example.

Symbols



- This symbol indicates important information for using this product.



- This symbol indicates useful information.

RasterLink is the trademarks or registered trademarks of MIMAKI ENGINEERING CO., LTD. in Japan and in other countries.

Adobe, the Adobe logo, Acrobat, Illustrator, Photoshop, and PostScript are the trademarks or registered trademarks of Adobe Systems Incorporated in the United States and other countries.

CorelDRAW is a trademark or registered trademark of Corel Corporation in Canada, the United States and other countries, and its affiliates.

Microsoft and Windows are trademarks or registered trademarks of Microsoft Corporation of the United States and other countries.

Apple and Macintosh are trademarks or registered trademarks of Apple Inc. of the United States and other countries.

Other company and product names mentioned herein are the trademarks or registered trademarks of the respective companies in Japan and in other countries.

Table of Contents

<i>Note</i>	<i>1</i>
<i>About Braille Printing</i>	<i>3</i>
<i>Target environment and precautions for this manual</i>	<i>3</i>
<i>Role of Software</i>	<i>4</i>
<i>Preparation for Braille Printing (RasterLink6Plus only)</i>	<i>4</i>
<i>Print Braille</i>	<i>5</i>

About Braille Printing

By setting a spot color name for the braille data you created, you can easily print braille in a dome shape which conforms to ADA (Americans with Disabilities Act) and JIS (Japanese Industrial Standard) (Quality standard JIS T9253 for braille with UV-curable resin ink).



- The dome shape may be slightly different depending on the differences in printer condition, settings, or media types.

In RasterLinkTools, **Standard speed mode** and **High speed mode** can be selected besides **Compliant mode** (which can produce JIS and ADA compliant Braille as described in this document), but UJF-7151plus/UJF-3042MKII/UJF-6042MKII does not support these modes.

Target environment and precautions for this manual

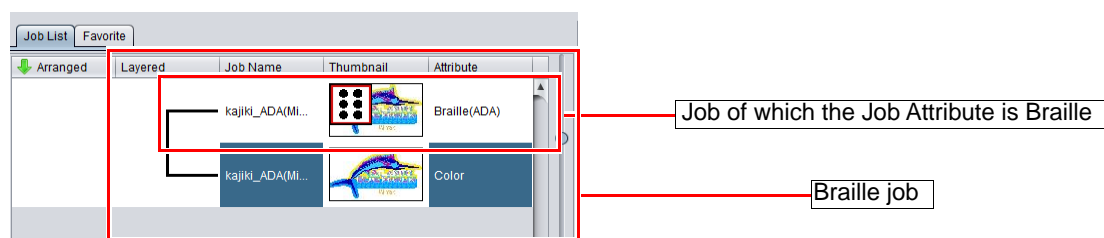
Please confirm the target environment and precautions in this manual as follows.

Target Environment

Printer	• UJF-7151plus / UJF-7151 plusII / UJF-3042MkII / UJF-3042MkII e / UJF-3042MkII EX / UJF-3042MkII EX e / UJF-6042MkII / UJF-6042MkII e / JFX200-1213EX / JFX200-2513EX
Ink	• LH-100 / ELH-100 (Clear, Primer) Braille is created using Clear and Primer.
Mimaki Driver	• When using RasterLink6Plus: The version that is compatible with the printer you use. • When using RasterLink7: Ver.5.9.6 or later
Software	• RasterLink6Plus Ver.1.8 or later • RasterLink7 Ver.3.3.0 or later • RasterLinkTools for Illustrator Ver.1.5.3 or later • [Windows] Adobe® Illustrator® CS6 or later CorelDRAW Ver1.4.1(32/64bit) or later • [Macintosh] Adobe® Illustrator® CS6 or later

Notations for the Jobs

In this guide, terms "Braille job" and "Job of which Job Attribute is Braille" are used, and each represents the following condition. Make sure you do not get them mixed up.



Notes



- For the job of which Job Attribute is Braille, Braille is not be displayed for preview.
- Braille job and cut job cannot be composed.

Role of Software

The roles of software are as follows.

Illustrator

Creating Braille data

Create the Braille data based on the Braille syntax.

RasterLinkTools

Set the spot color for Braille printing

You can set and save spot colors for Braille printing in the pre-existing Braille data.

RasterLink

Printing Braille

You can print the dome-shaped Braille automatically without setting the print count and so on.

Preparation for Braille Printing (RasterLink6Plus only)

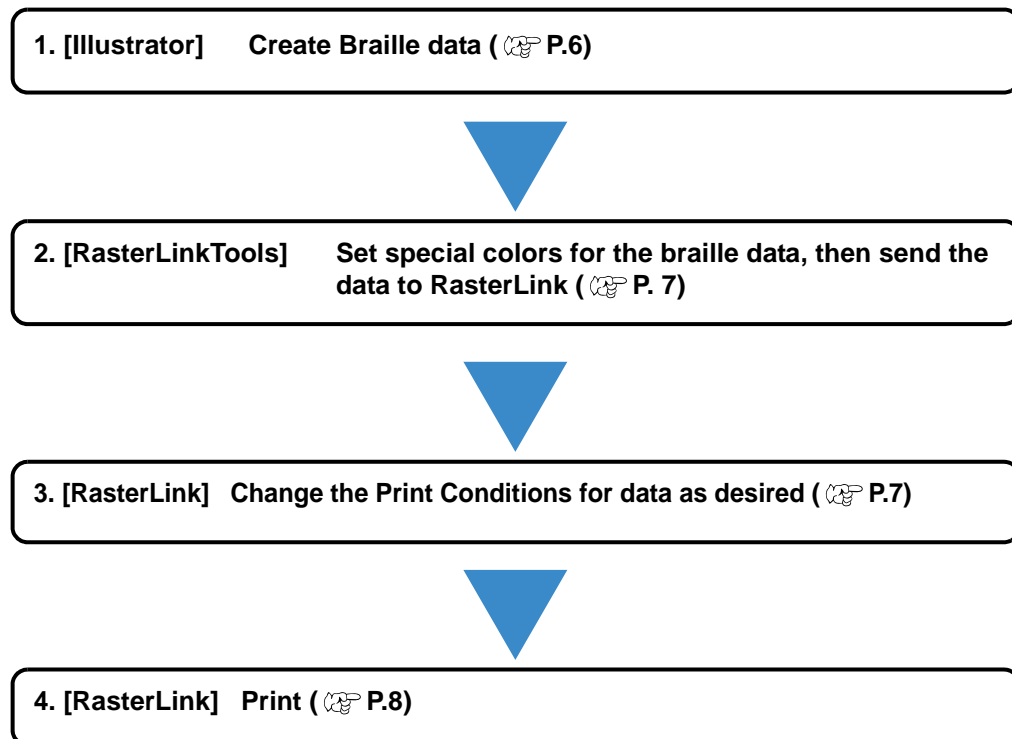
Before performing Braille printing, install the profiles in the following list to RasterLink6Plus for the target printer. If Braille data is sent to RasterLink6Plus without the following profiles installed, an error message is displayed, and Braille data cannot be read in.

Printer	Ink set	Output setting	Media	Media material
UJF-7151plus	LH-100 CMYK ELH-100 CMYK	600 x 900VD	UV- PET	White PET Gloss
UJF-3042MkII	LH-100 CMYK ELH-100 CMYK	1200 x 1200VD*	UV- PET V3.5	
UJF-3042MkII EX	LH-100 CMYK ELH-100 CMYK	1200 x 1200VD*	UV- PET V3.5	
	LH-100 CMYKLcLm ELH-100 CMYKLcLm			
UJF-6042MkII	LH-100 CMYK ELH-100 CMYK	1200 x 1200VD*	UV- PET V3.5	
	LH-100 CMYKLcLm ELH-100 CMYKLcLm			

*. For UJF-3042MkII, UJF-3042MkII EX and UJF-6042MkII, only the last print layer (Clear) is printed at 600 x 600VD.

Print Braille

Print Braille on the color plate. Here, the following procedure is used for an explanation using an example of the standards for Braille of ADA.



1. Create the Braille data. (Illustrator)

- (1) Based on the Braille syntax, check the Braille arrangement for the character you want to create.

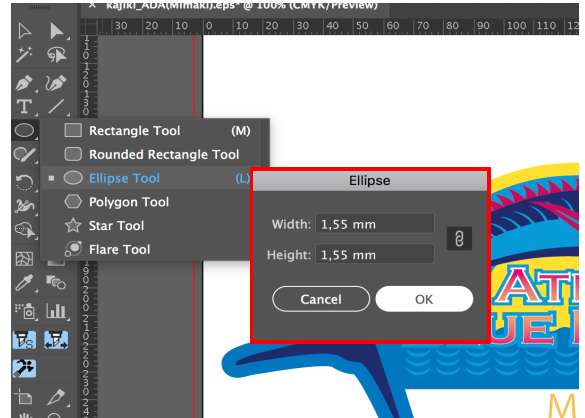
Example

Mimaki →

- (2) Use the Ellipse Tool in Illustrator to create the following shape.

- Shape: Perfect circle
- Diameter: 1.55 mm (ADA)

If you set the Line to none, it will be easier to adjust the position in the next step.



- (3) Layout the shape you created in (2) based on the standards for Braille of ADA.

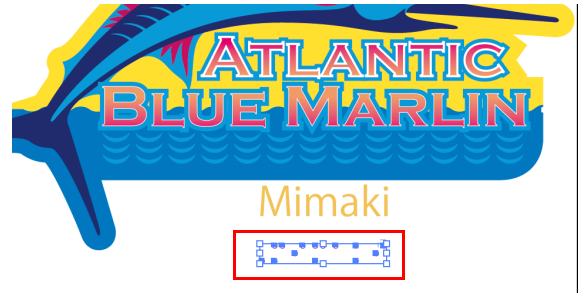



Important!

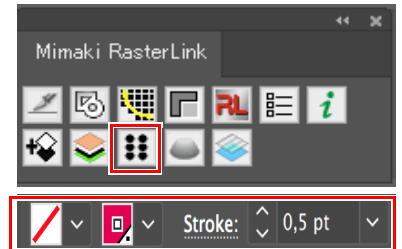
- If the data is not created as described in steps 1 (1) to (3) on P. 6, it may not be possible to print Braille complying with standards.
- Braille may not be printed correctly with data that includes transparency effects. When printing is not correctly with RasterLink7, save it in PDF format of PDF 1.4 or later from the file save function of Illustrator.
- When using RasterLink7, the maximum number of Braille characters that can be printed per print job is 4,000.
 - When the number of copies is specified on the General Print screen of RasterLink7, "Number of copies x number of Braille characters in a job" should not exceed 4,000. Example: If the number of copies is set to 20, the maximum number of Braille characters in a job is 4,000 divided by 20 is equals 200.

2. Set Special Colors for the Braille Data, then Send the Data to RasterLink (RasterLinkTools)

- (1) Select the Braille data on Illustrator.



- (2) Click the [Braille] icon  on RasterLinkTools.

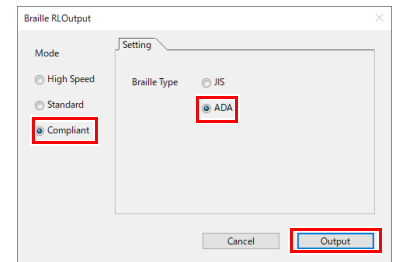


- "MmkBraille_ADA" is attached to the Braille data line, and the Stroke is set to "0.5 pt", and the Paint is set to "None".
- The [Braille Function RL Output] window appears.

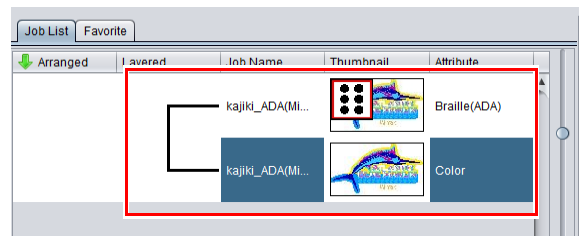
- (3) Select "ADA" in [Compliant] mode.

- (4) Click [Output].

- The [Save as] window appears.
- Enter the file name and save.



- The job which is composed of Color and Braille is registered to Raster-Link6Plus.




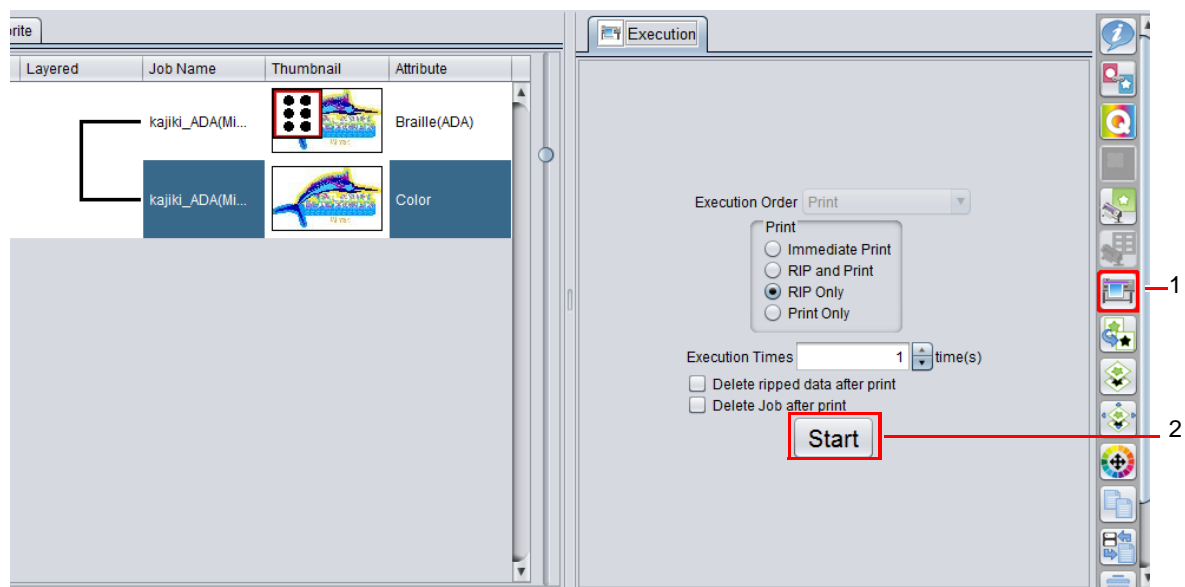
3. Change the Print Conditions for data as desired. (RasterLink)



- You cannot set the following for the Braille job.
 - Arrange with other job
 - Change the scale
 - Turn on the Mirror function
 - Add Fotoba cut mark
 - Crop
 - Jig Print
 - Step & Repeat
 - Tiling
 - Kebab Jig Print
- You cannot do the following for the job of which the Job Attribute is "Braille".
 - Change the Print Condition
 - Color Replacement and Special plate

4. Execute printing. (RasterLink)

- (1) Click the [Execute] icon  .
- (2) Click [Start], and execute printing.



- Printing is performed automatically with multiple feeds so that the height of the Braille conforms to the standards of ADA.
- The printing time for one row of Braille is approximately 37 minutes. (For UJF-7151 plus)

