

Setup Guide

Textile software RIP

Mimaki™

TxLink™5



MIMAKI ENGINEERING CO., LTD.

ErgoSoft AG
Moosgrabenstr. 13
CH-8595 Altnau, Switzerland

© 2024 ErgoSoft AG, All rights reserved.

The information contained in this manual is based on information available at the time of publication and is subject to change without notice. Accuracy and completeness are not warranted or guaranteed.

No part of this manual may be reproduced or transmitted in any form or by any means, including electronic medium or machine-readable form, without the expressed written permission of ErgoSoft AG.

PANTONE® Colors displayed in the software application or in the user documentation may not match PANTONE-identified standards. Consult current PANTONE Color Publications for accurate color.

PANTONE® and other Pantone trademarks are trademarks or registered trademarks of Pantone LLC in the United States and/or other countries. Pantone LLC, 2022.

Pantone is the copyright owner of color data and/or software which are licensed to MIMAKI ENGINEERING CO., LTD. to distribute for use only in combination with TxLink series. PANTONE Color Data and/or Software shall not be copied onto another disk or into memory unless as part of the execution of TxLink series.

Brand or product names are trademarks of their respective holders.

The [TxLink5](#) is available in different editions. Therefore, the description of available features in this document does not necessarily reflect the license details of your edition of the [TxLink5](#). For information on the features included in your edition of the [TxLink5](#) refer to the MIMAKI ENGINEERING website or contact your dealer.

Contents

Introduction	1
Environment	1
About multiple printer connection	2
Using PICT with TxLink5 supporting printers	3
Setup flow	4
Before installing TxLink5	5
Installation and Activation of TxLink5.....	6
First-time settings of TxLink5.....	13
Print Environment Settings.....	13
About “Print Environment”	13
Additional method of “Print Environment”	13
Ink setting.	16
Retrieve dot volume information from printer.....	17
Retrieve print settings from printer	18
Documentation of TxLink5.....	18
In these cases	19
Starting TxLink5 JobComposer	19
Using Spectrophotometer	20
Spectrophotometer setting	20
Setting up Barbieri.....	20
Changing the USB Dongle Location.....	21

Introduction

Thank you for purchasing our “TxLink5”.
This document explains how to setup the TxLink5.

Environment

Supported Printers:

TxLink5 Lite	TS100-1600, TS55-1800, TS330-1600, Tx300P-1800 MkII, Tx330-1800, TS200-1600, TS330-1800
TxLink5 Standard	TS100-1600, TS55-1800, TS330-1600, Tx300P-1800 MkII, TS330-3200DS, Tiger-1800B MkII / MkIII (*1), Tiger600-1800TS, Tx330-1800, TS200-1600, TS330-1800
TxLink5 Professional	TS100-1600, TS55-1800, TS330-1600, Tx300P-1800 MkII, TS330-3200DS, Tiger-1800B MkII / MkIII (*1), Tiger600-1800TS, Tx330-1800, TS200-1600, TS330-1800

*1. When using Tiger-1800B MkII or MkIII, register the printer as “Tiger-1800B MkII / MkIII”.

Supported Image Format: PostScript2/3, EPS, AI, PDF (1.3~1.7), JPEG, BMP, PNG, TIFF and PSD

System Recommendation:

Requirement	Recommended
OS	Windows 10® Home (64bit) Windows 10® Pro (64bit) Windows 11® Pro
Web browser (*1)	Microsoft Edge, Google Chrome
Processor (*2) (*3)	intel® Core i7 (or i5) Physical cores : 8
Chipset (*2)	intel® genuine chipset
RAM	18GB or more
Storage	1TB SSD * 2 drives or more
Network interface (*3)	1000BASE-T (*4)
Network cable	Category 6 (CAT6)
USB interface (*5)	USB2.0 port
Display	1,700 x 900 pixels or more

*1. It is needed for License Activation. An activation error will occur if Internet Explorer is used.

*2. Regarding processor or chip set, use intel genuine products. If not use these products, some communication error may happen during printing and the printer may stop printing.

*3. It is needed for License Activation, and also for connecting with printer having TCP/IP port.

*4. 10GBASE-T is recommended for Tiger series.

*5. It is needed for a dongle connection, and also for connecting with printer having USB2.0 port. When connects multiple dongles, use USB hub which electric power supplying from external (e.g. via AC Power adapter) and supplied 50mA or more for each dongle.

About multiple printer connection

TxLink5 allows multiple printers connection (maximum four printers) when connects dongles as number of connecting printers. However, if you want to simultaneously print with multiple printers, there are some conditions should take care.

Requirement	Required
Printer Interface	<ul style="list-style-type: none">- Ethernet connection is needed. A local network environment via only one network HUB without unnecessary network nodes connection is recommended.- USB2.0 interface connection has not enough transfer speed for the simultaneously printing.- Higher performance is required. Refer to "Recommended" System Requirements as mentioned at previous page.
Processor	
RAM	
Storage	
Other software products in the RIP Station	<ul style="list-style-type: none">- Uninstall programs other than TxLink5 (and necessity Security software) as possible.

As the reference information, shows an example below.

Note that, this is just one of case and not guaranteed the performance. Some conditions, not only PC spec but also complexes of image data make influence for the performance.

Ex)

- Multiple full-width Step & Repeat jobs simultaneously printed without print head suspending at all of the print mode with following condition.

Requirement	Required
Printers	Four TS330-1600(4Color), or four TS330-1600(8Color)
Printer Interface	Ethernet connection which only connects one RIP Station and four TS330-1600s via one network HUB.
Processor	Intel Core i5-13500
RAM	16GB
Storage	M2 SSD 235GB
Image file	LZH compressed CMYK TIFF file (not contains extra channels)

Using PICT with TxLink5 supporting printers

Requires following conditions to display job information sent from TxLink5 at PICT.

Retrieves firmware version from printer:

Please retrieve the firmware version information from the printer. For the operation, refer to ***[Retrieve dot volume information from printer]*** section in this document.

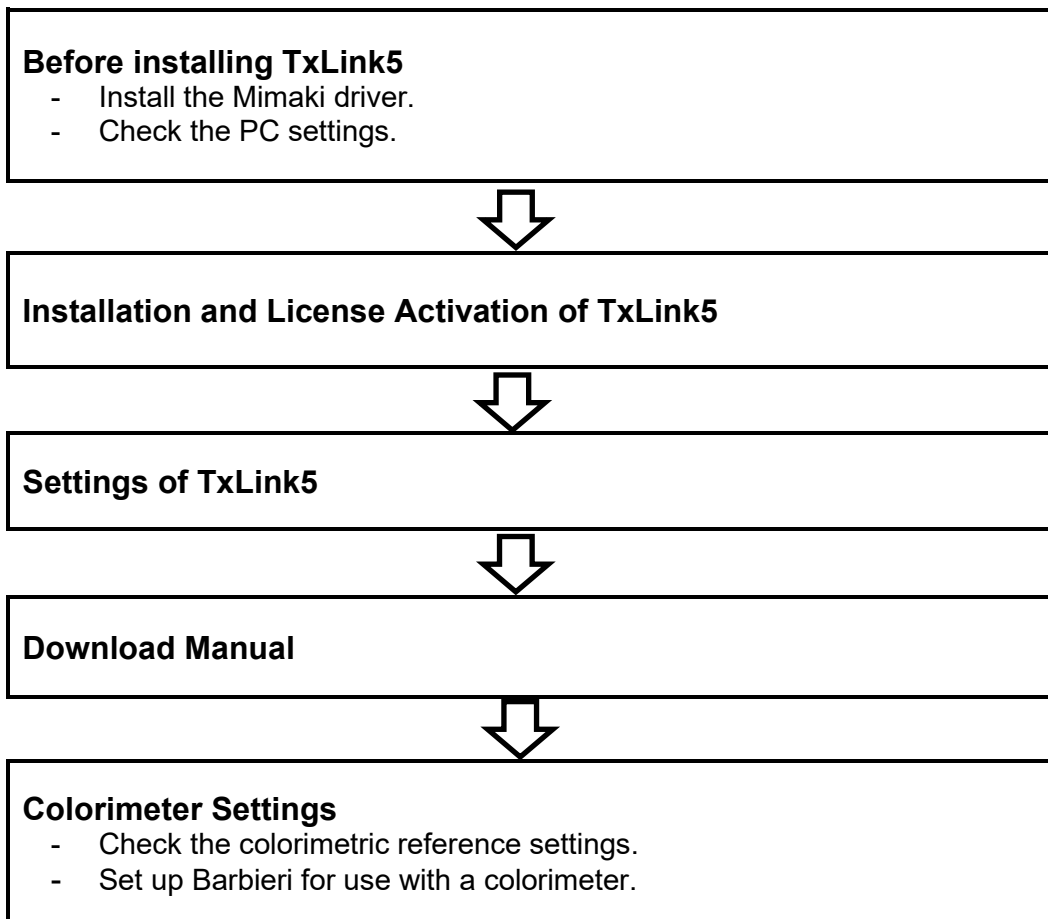
Target printer: TS330-1600, TS330-3200DS, Tx330-1800, TS200-1600, TS330-1800

Required Versions:

Following software products are required, at each printer. The version shows the least.

Printer	Version			
	Printer Firmware	MIMAKI Driver	PICT Up	PICT
TS330-1600	3.0	5.9.3	1.30	1.2.0
TS330-3200DS	1.1	5.9.6	1.30	1.4.0
Tx330-1800	1.1	5.9.10	1.41	1.4.1
TS200-1600	1.1	5.9.19	1.60	1.6.0
TS330-1800	5.0	5.10.3	1.70	1.70
Tiger600-1800TS	1.02	N/A	1.30	1.2.0

Setup flow



Before installing TxLink5

1 Check whether you have the following items in hand:

- USB dongle of the Edition for which the printer to be used can be registered.

If you do not have a USB dongle or a USB dongle for an edition for which the printer you are using cannot be registered, please contact your dealer.

2 Install the Mimaki driver for your printer.

Please install the Mimaki driver for your printer.

Mimaki drivers can be downloaded from our official website (<https://mimaki.com/>). Compatible models can be checked on the Mimaki driver download page.

However, do not install the Mimaki driver in the following cases:

- Tiger-1800B MkII / MkIII, Tiger600-1800TS is used.
- Using Ethernet connection to TS55-1800, Tx300P-1800 MkII

3 Connect the PC to internet.

To activate your TxLink5 license you will need internet access and the USB dongle.

Note that Internet Explorer is no longer supported for the activation. It is necessary to change default Web browser to Microsoft Edge or Google Chrome before the activation.

Licensing is not possible in a tethered environment.

4 Confirm Date / Time settings of your PC

If the Date / Time settings is not match to current, make match to current Date / Time. There is a possibility cannot execute TxLink5 if the Date / Time settings is incorrect.

5 Check the Automatic Updates setting of Windows Update.

Windows Update may automatically install updates at set times and restart the PC. Printing will be interrupted because the PC may restart even while printing is in progress.

To prevent the PC from restarting automatically, please set a pause on Windows Update updates. Also, set the active time so that the PC does not restart during the active time.

6 Check the setting of the Windows power supply.

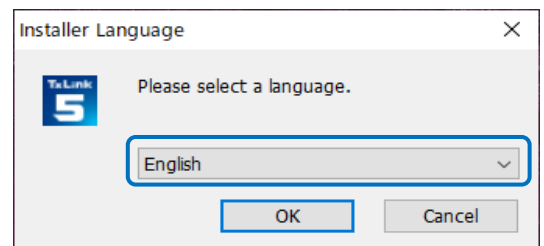
When set to enter into the system standby (sleep) if no operation has been performed for a certain period of time, TxLink5 stops its operation and printing also stops even though in the printing operation. To prevent this, please confirm "System standby" setting.

Installation and Activation of TxLink5

- 1** Before installation, connect the PC to internet.
- 2** Download the TxLink5 installer from our official website (<https://mimaki.com/download/software.html>).
- 3** Right-click on the downloaded file and select **[Extract All]** to expand the folder.
- 4** Double-click [CD Menu.exe] in the extracted folder.
- 5** Display CD menu. Select **[Install TxLink5]**.



- 6** Installer will start.
[Installer Language] screen is displayed.
Select the language you want to show during the installation. Then click **[OK]**.



- 7** Setup Wizard will start. Click **[Next]**.
- 8** [License Agreement] screen is displayed.
Read it and click **[I Agree]** if agreed.
- 9** Choose Install Location. Select a folder in the drive with enough capacity.
After selecting, click **[Next]**.
- 10** Choose Setup Method and click **[Next]**.
- 11** Choose Start Menu Folder. Click **[Install]**.
- Installation will start.
- 12** **[User data]** screen is displayed.
Specify a folder to save the TxLink5 setting and temporary files. Then, click **[OK]**.

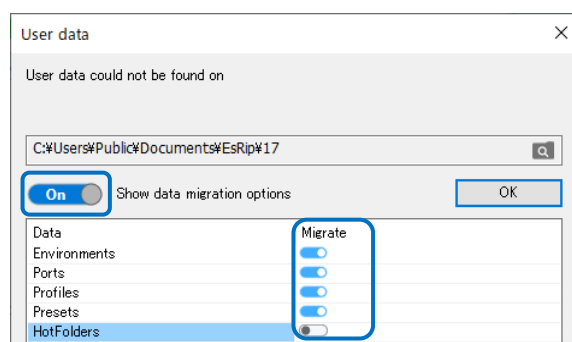
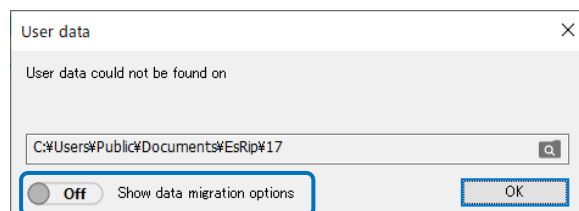


An empty folder will display [Show Data Migration Options] toggle.

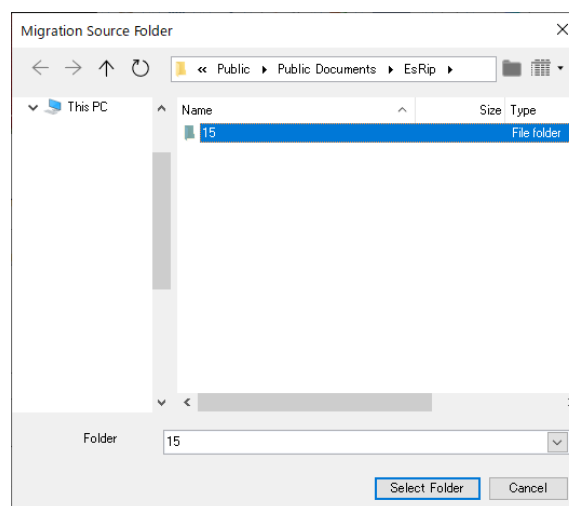
When [Show Data Migration Options] is turned on, you can import the following settings from the user data folder of TxLink4 or TxLink5 on another PC.

- Environments : Migrate the print environment.
- Ports : Migrate port definitions (TCP/IP addresses and folder paths only).
- Profiles : Migrate ICC profiles and linearization.
- Presets : Transfers application defaults, image presets, job presets, ink types, and media types.
- HotFolders : Migrate hot folder configurations.

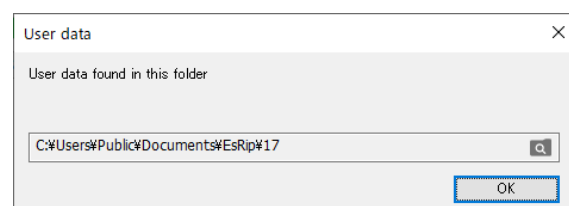
Turn on the settings you want to migrate and click **[OK]**.



[Migrate Source Folder] screen will appear. Select the folder (TxLink4 user data folder or TxLink5 user data folder on another PC) into which you wish to import settings and click **[Select Folder]**.

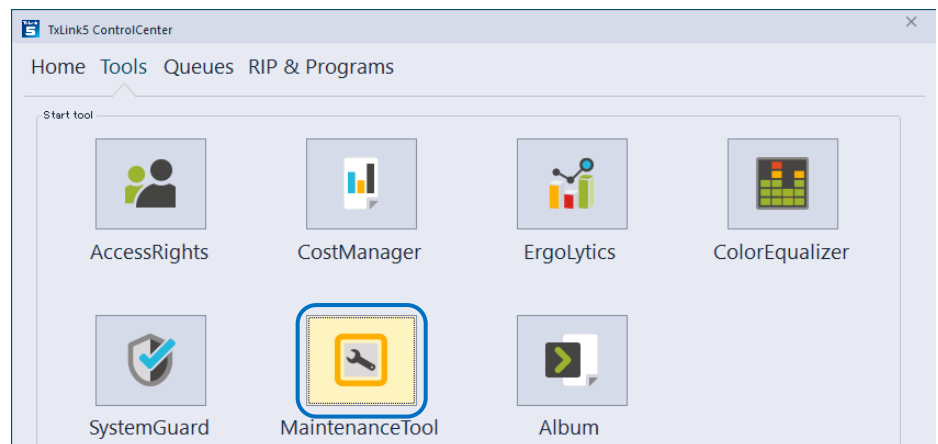


The settings will be copied to the folder where the new TxLink5 settings will be stored. Click **[OK]**.

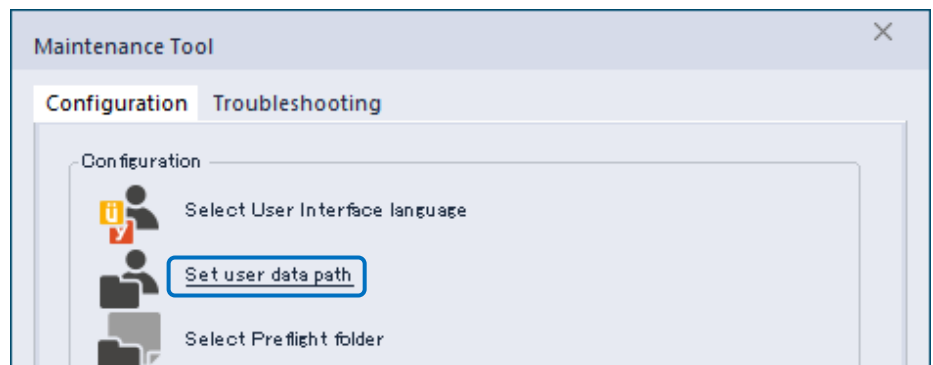


If you want to execute the Data Migration after installation, use **MaintenanceTools**.

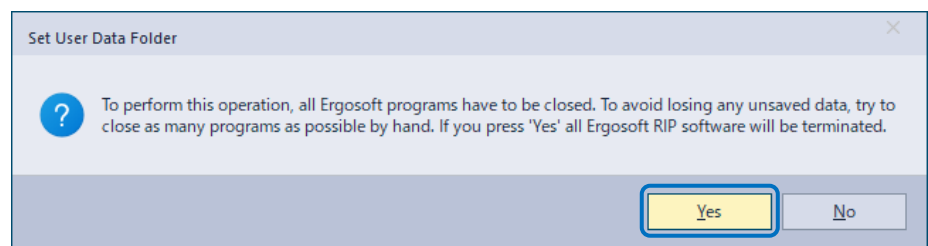
Click **[MaintenanceTool]** in **[TxLink5 Control Center] > [Tool]**.



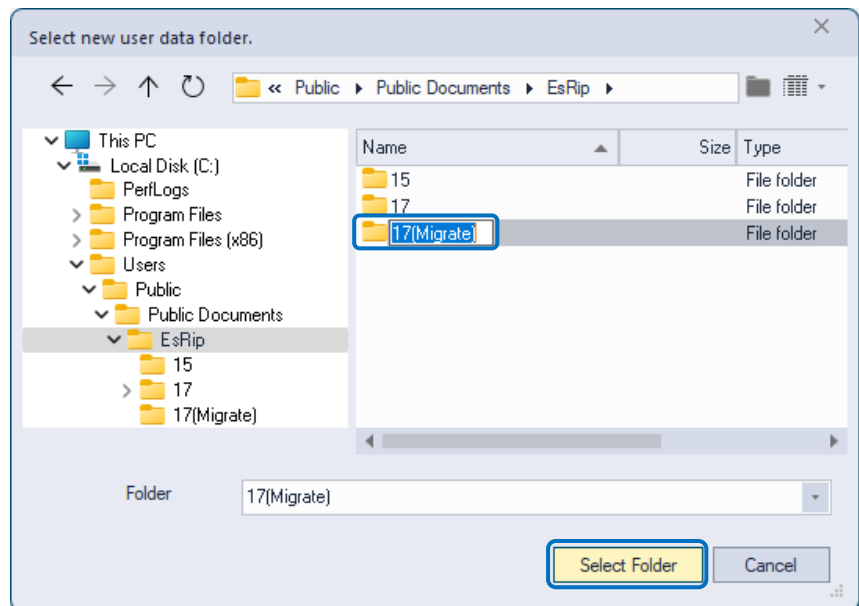
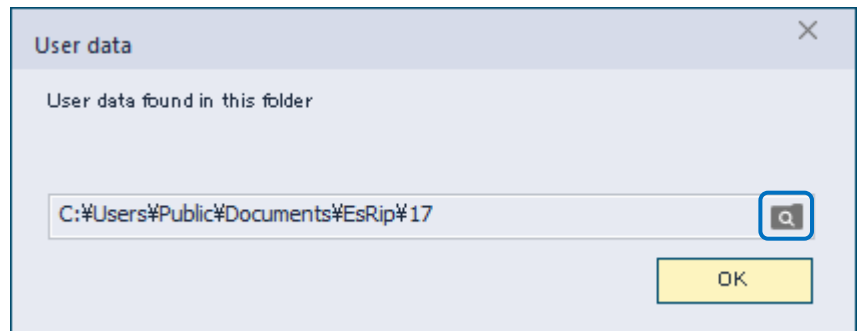
Click **[Configuration] > [Set user data path]**.



Below message will show, close affected programs by click **[Yes]**.

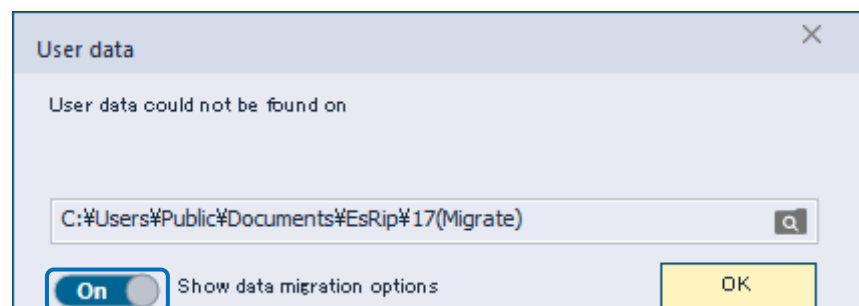


Click Folder Icon in **[User data]** dialog. Then, create a new folder under “C:\Users\Public\Documents\EsRip” and click **[Select Folder]**. Or empty existing folder in advance, and select it. The default User Data folder for TxLink5 is “C:\Users\Public\Documents\EsRip\17”.

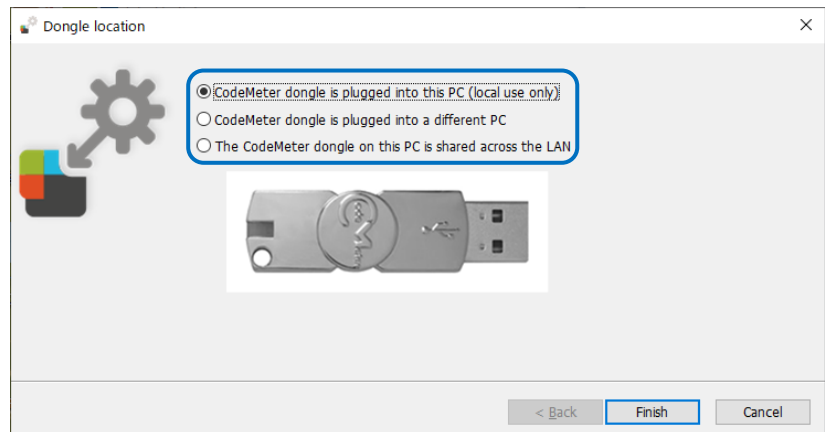


Note: **[Show Data Migration Options]** will not appear, if selected a folder had been once using as User data folder.

Turn on the **[Show data migration options]**. Then continue the migration as explained at previous page.



- 13** Connect the USB dongle to the PC where you will install the software.
- If you are using a network license, connect the USB dongle to another computer that will act as a li-cense server.
- 14** Specify the dongle location and click **[Finish]**.



Select the dongle location from the following

- **[CodeMeter dongle is plugged into this PC (local use only)]:**
Select this option if a USB dongle is connected to the PC you are currently working on.

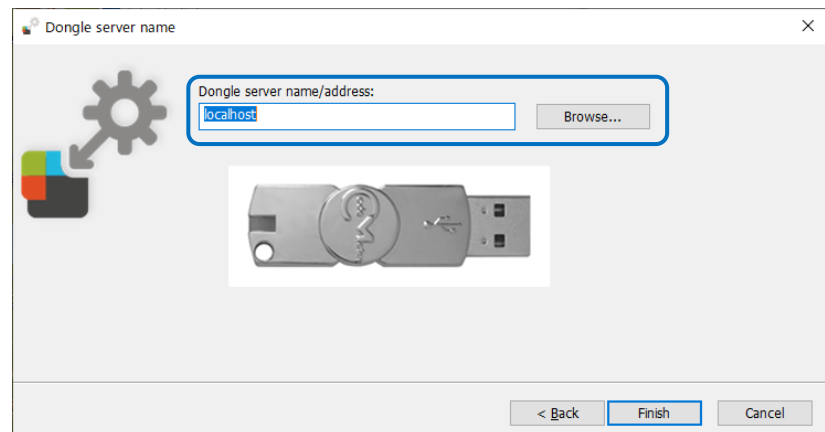
- **[CodeMeter dongle is plugged into a different PC]:**

Select this option if the USB dongle is connected to another PC on the network. TxLink5 must be installed on the PC to which the USB dongle is connected and the dongle location must be activated by selecting [The CodeMeter dongle on this PC is shared across the LAN].

Click [Next] and [Dongle Server Name] screen will appear. Enter the network PC name or IP address of the PC to which the USB dongle is connected in [Dongle server name/address:] field, or click [Browse...] to search manually.

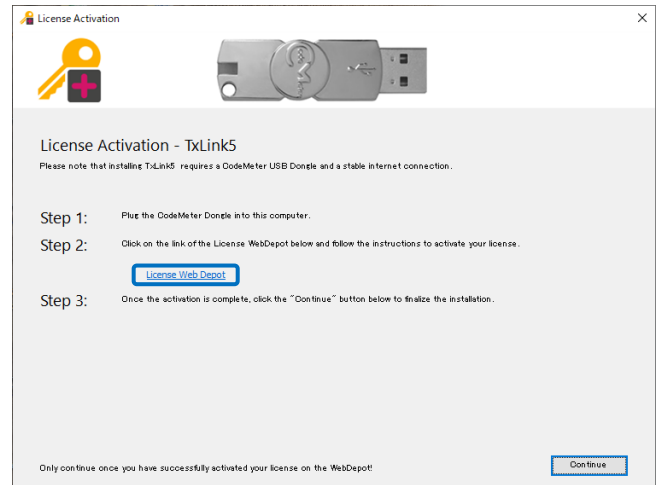
- **[The CodeMeter dongle on this PC is shared across the LAN]:**
Select this option if you want to use the USB dongle on another PC.

If you want to change the location of the dongle specified here, please refer to **[In this case] > [Change USB dongle location]**.



15 [License Activation] screen is displayed.

Click **[License Web Depot]** link.

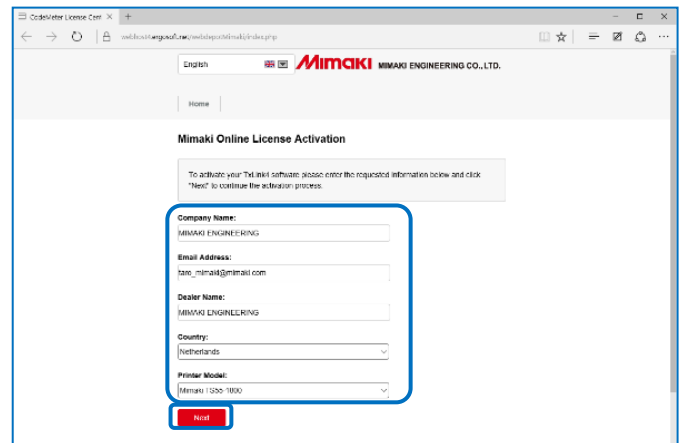


16 [Mimaki Online License Activation] is displayed at Web browser.

Enter your Company Name, Email Address of the person in charge and your Dealer Name, in addition select your Country and your Printer Model.

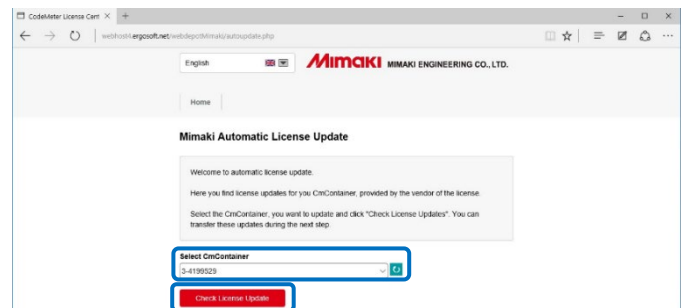
After entering all of them, click **[Next]**.

Note that, the **[Printer Model]** pull-down menu also shows unsupported printer models in TxLink5, which only supported in TxLink4.



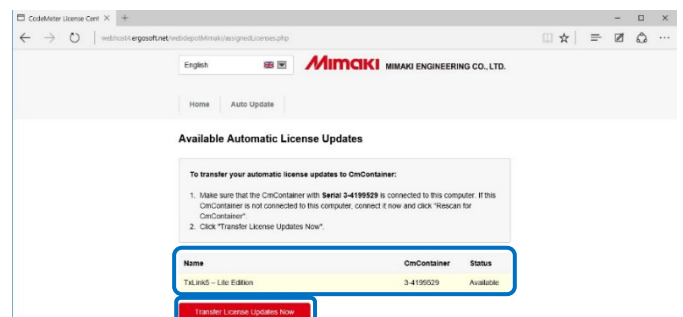
17 [Mimaki Automatic License Update] is displayed.

Please confirm that the serial number printed on your dongle is selected at **[Select CmContainer]**. Then click **[Check License Update]**.



18 [Available Automatic License Updates] is displayed.

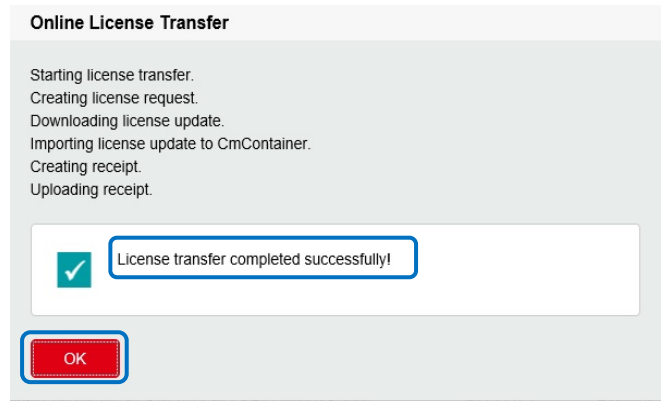
Please confirm the information. Then click **[Transfer License Updates Now]**.



19 TxLink5's license will transfer into the dongle.

Don't touch the Dongle or Web browser during the license transferring.

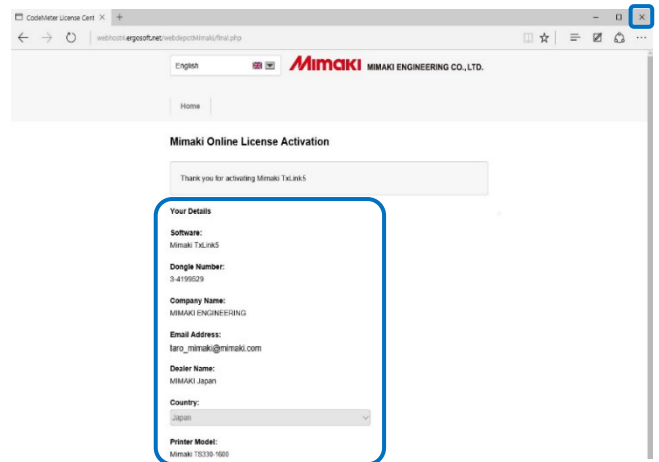
After showing “**License transfer completed successfully!**” message, click [OK].



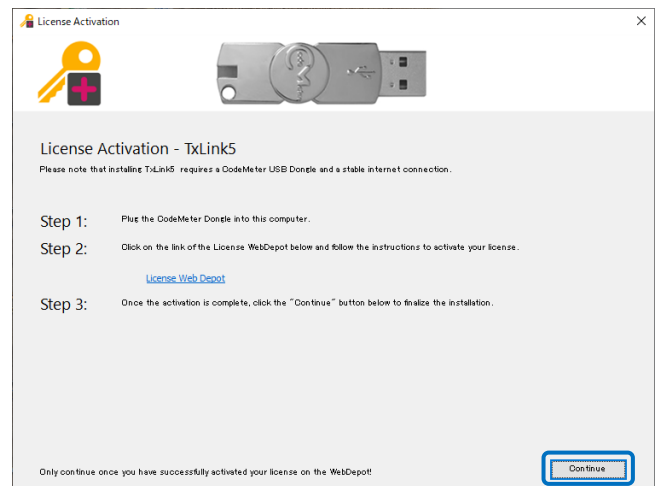
20 Activated information is displayed.

This information will be sent to your registered e-mail address.

Close Web browser screen and continue the installation.



21 Click [Continue] at the [License Activation] screen to continue the installation.

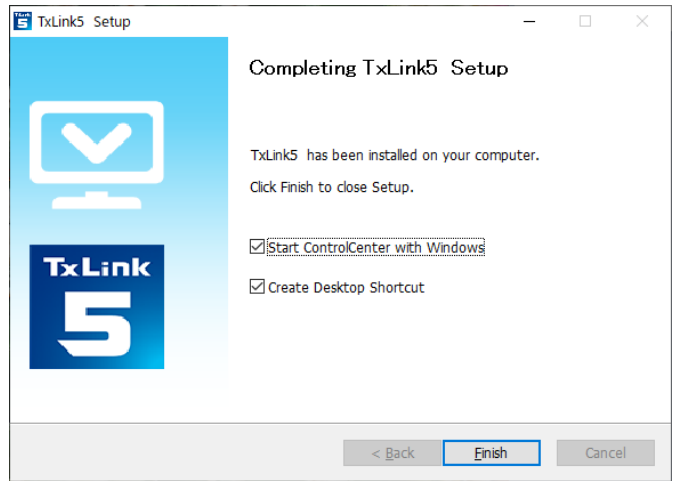


22 [Installation complete] screen is displayed.

Click [Next].

23 The installation wizard is completed.

Click **[Finish]**.



- **[Start ControlCenter with Windows]** : The TxLink5 Control Center will automatically start up when the OS starts up.
When you click **[Finish]** on Completing TxLink5 Setup screen, the TxLink5 Control Center will start up.
- **[Create Desktop Shortcut]** : Create a shortcut to the TxLink5 Control Center on your desktop.

First-time settings of TxLink5

Print Environment Settings

About “Print Environment”

Print environment: It puts output information (printer, output port, output resolution, ICC profile setting etc...) into one file. If you set print environment, it enables to output in appropriate state.

Additional method of “Print Environment”

Adding way for Print Environment is the following two ways.

- Download Print Environment file from Mimaki website and add it.
- Create your own Print Environment manually.

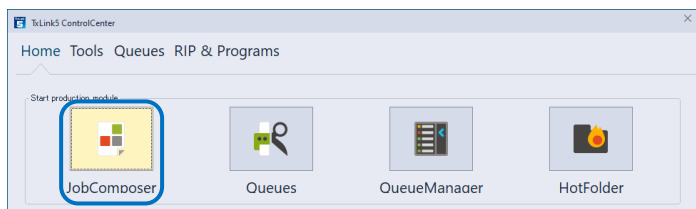
This section explains how to apply the printer environment file downloaded from our official website the first time you start TxLink5. If you wish to create or add your own printer environment file, or if you wish to start TxLink5 for the second or subsequent times, please refer to the chapter "Importing a Print Environment" in "Print Environment" Application notes.

- 1 Download a profile from the download page of each printer on our official website:

<https://mimaki.com/download/inkjet.html>

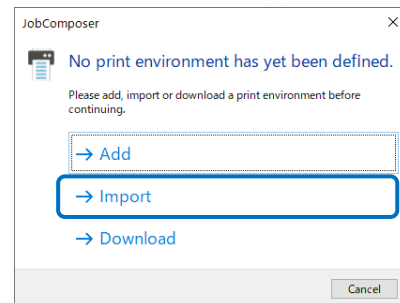
- The file extension is *.PrEnv.
- It may not be available depending on your models or ink.

- 2 Click **[Job Composer]** in **[TxLink5 Control Center]** screen.



- 3 When Job Composer is launched for the first time, **[Print Environment Manager]** screen and “No Print Environment has yet been defined.” screen will appear.

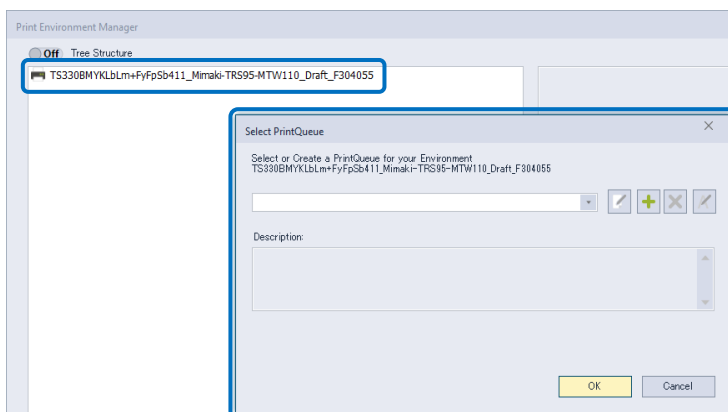
Click **[Import]**.



- 4 **[Open]** screen is displayed.

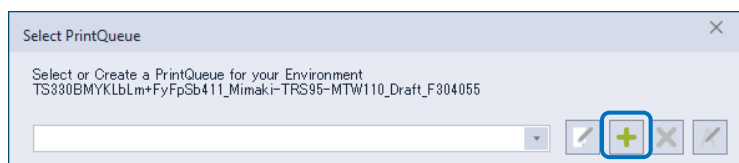
Select downloaded printer environment file and click **[Open]**.

- 5 The selected file will add to the **[Print Environment Manager]** screen and the **[Select Print Queue]** screen will appear.



- 6 Connect the PC to printer, turn on the printer. Then setup as following procedure.

- 7 On **[Select PrintQueue]** screen, click **[+]** (New) button.



- 8 **[Edit Printer Port Settings]** screen is displayed.

Click **[Add Port]**.

- 9 **[Add Port]** screen is displayed.

In case of connecting USB2.0 -> select **[Mimaki USB2 Port]**,

in case of connecting Ethernet cable -> Select **[Mimaki TCP/IP]** and click **[Yes]**.

TS330-1600 is used as an example here.

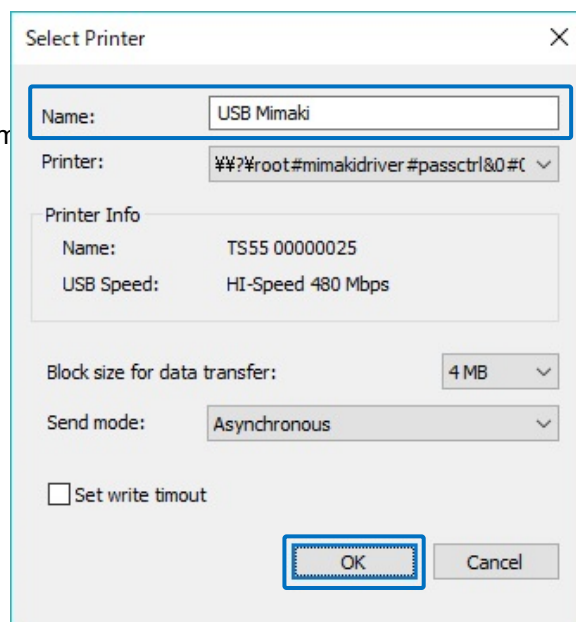
When using Tiger Series, refer to the Application Notes **[Configuring a Printer Port]**.

10 When you select **[Mimaki USB port]**

Input a name to **[Name]** which identify the printer.

- In case of setting multiple printers, you cannot register same

After setting, click **[OK]** and close the screen.

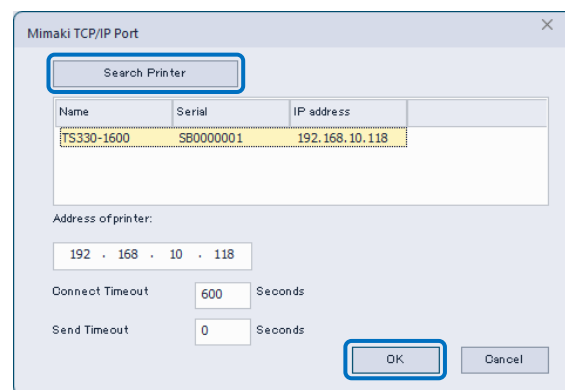


When you select **[Mimaki TCP/IP]**

Click **[Search Printer]** button.

The printer which is connecting will be displayed on the list and select it.

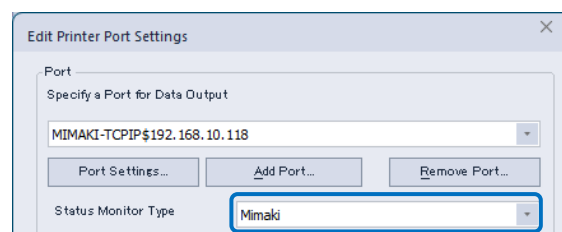
Click **[OK]**.



11 Return to the **[Edit Printer Port Settings]** screen.

Select **[Mimaki]** at **[Status Monitor Type]** menu.

Click **[OK]**.



12 Return to the **[Select Print Queue]** screen.

Select the newly created print queue in the print queue list.

Close the **[Select Print Queue]** screen by **[OK]**.

13 After making the above settings, click **[Settings]** on the **[Print Environment Manager]** screen.

The **[Print Environment Manager]** screen is displayed. Please follow the **[Ink setting]** and **[Retrieve print settings from printer]** on the next page and thereafter.

Ink setting.

It is necessary to set the slot order of ink which is installed on printer depending on model, using ink.

- **For Tx series make sure to perform this setting. Also, the file provided from Mimaki needs to this setting.**

- Setting is also may be needed when using fluorescent color on TS330-1600, TS55-1800 and TS330-1800.

- **DO NOT change the settings except above model, ink color.**

From the left list on the [Print Settings] screen, select "Printing Ink Assignment".

[For Tx series]

- In the conditions below, set as follows.

Red and orange are mounted at the same time:

Red : "Orange / Red"

Orange: "Profile channel 8"

Blue and violet are mounted at the same time:

Blue : "Blue / Violet"

Violet : "Profile channel 8"

- In case of there is no appropriate color to selection items and when you want to put the color into ICC profile, select "Profile channel 8" ~ "Profile channel 12".
- In case of there is no appropriate color to selection items and does not want to put the color in ICC profile, using as replacement color, select "spot color1" ~ "spot color 6".

[When using fluorescent color on TS330-1600, TS55-1800 and TS330-1800]

- In case of using "Print environment file" : **DO NOT CHANGE this setting.**
- In case of creating "Print environment file" on your own. :

At initial setting, fluorescent color can be used for color replacement.

If you would like to create ICC profile which includes fluorescent color on TxLink5, change the setting as follows.

Before change (Use only for color replacement)	⇒	After change (Use for color replacement or ICC profile)	Ink color
Spot color 1(S1)	⇒	Profile channel 8(P8)	Fluorescent yellow
Spot color 2(S2)	⇒	Profile channel 9(P9)	Fluorescent pink

Retrieve dot volume information from printer

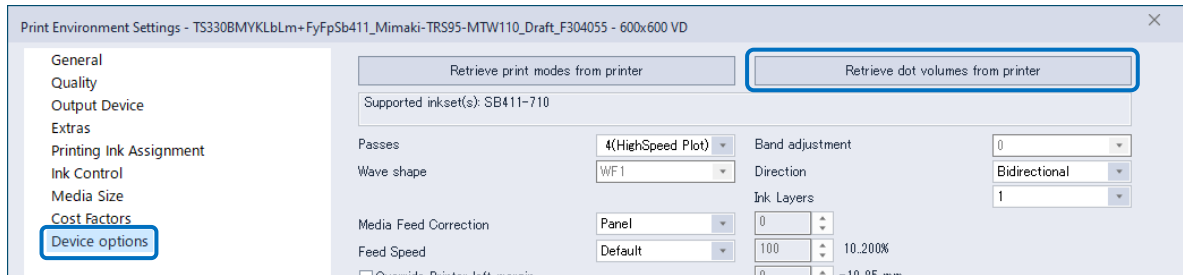
for TS100-1600, TS330-1600, TS55-1800, Tx300P-1800MkII, TS330-3200DS, Tx330-1800, TS200-1600 and TS330-1800.

Retrieves dot volume of ink from the connection printer.

This feature also retrieves other printer specific information such as firmware versions.

Notes: In case of PICT supported printers, retrieving the firmware version is required to use PICT feature.

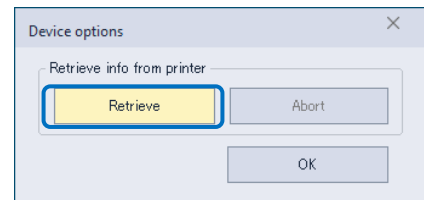
- 1) From the left list on the **[Print Environment Settings]** screen, select **[Device options]**.
- 2) Press **[Retrieve dot volumes from printer]** button.



- 3) **[Device options]** screen is displayed.

Press **[Retrieve]** button.

- 4) After the succeeded message shown, close **[Device options]** screen by **[OK]**.



After above settings, click the **[OK]** button and close the **[Print Environment Settings]** screen. Main window of TxLink5 will show.

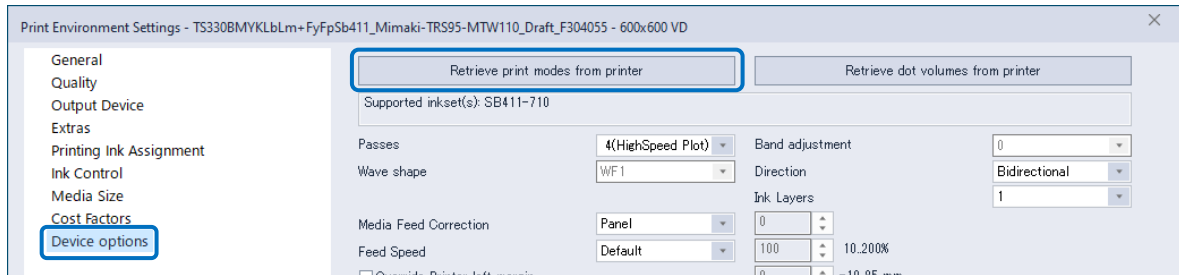
Click **[OK]** and close the **[Print Environment Manager]** window, and the **[Job Composer]** window will show.

Retrieve print settings from printer

for TS100-1600, TS330-1600, TS55-1800, Tx300P-1800MkII, TS330-3200DS, Tx330-1800, TS200-1600 and TS330-1800.

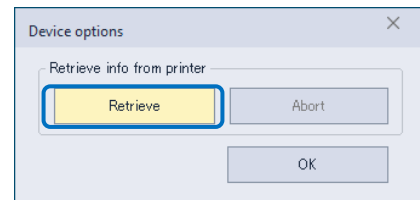
It is necessary to retrieve print settings (output resolution, passes etc...) from the connecting printer.

- 1) From the left list on the **[Print Environment Settings]** screen, select **[Device options]**.
- 2) Press **[Retrieve print modes from printer]** button.



- 3) **[Device options]** screen is displayed.

Press **[Retrieve]** button.



* When you select Ethernet port, it takes several seconds for the inquiring.

- 4) After the succeeded message shown, close **[Device options]** screen by **[OK]**.

After above settings, click the **[OK]** button and close the **[Print Environment Settings]** screen. Main window of TxLink5 will show.

Click **[OK]** and close the **[Print Environment Manager]** window, and the **[Job Composer]** window will show.



When you newly created Print Environment, it is necessary to complete it with more steps.

Please refer to corresponding Application Notes in the downloaded documents.

- Ink Limit, Density Linearization and Creating Printer Profile :
[Total Ink Limit and Bleed Chart], [Printer Linearization], [Creating Printer Profiles with ColorGPS]
- Configuring Print Environment :
[Print Environment]

Documentation of TxLink5

Please download the documents for TxLink5 from following menu after starting TxLink5.

[Help] > [MIMAKI on the Web] > [Download Documentation]

In these cases

Starting TxLink5 JobComposer

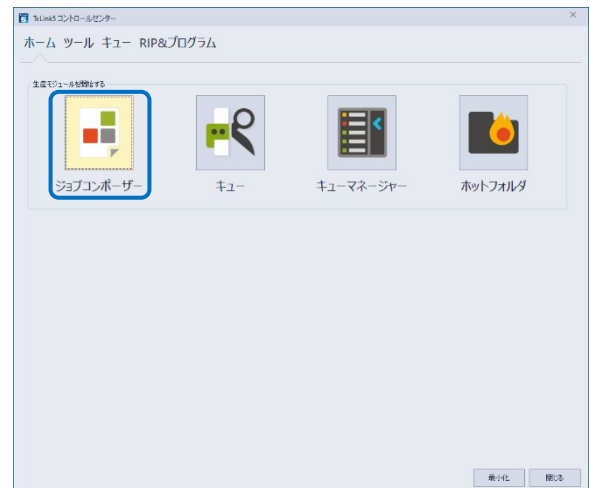
At first, connect the USB dongle, and then start TxLink5.

- 1 Double-click the **[TxLink5 Control Center]** icon on the desktop.

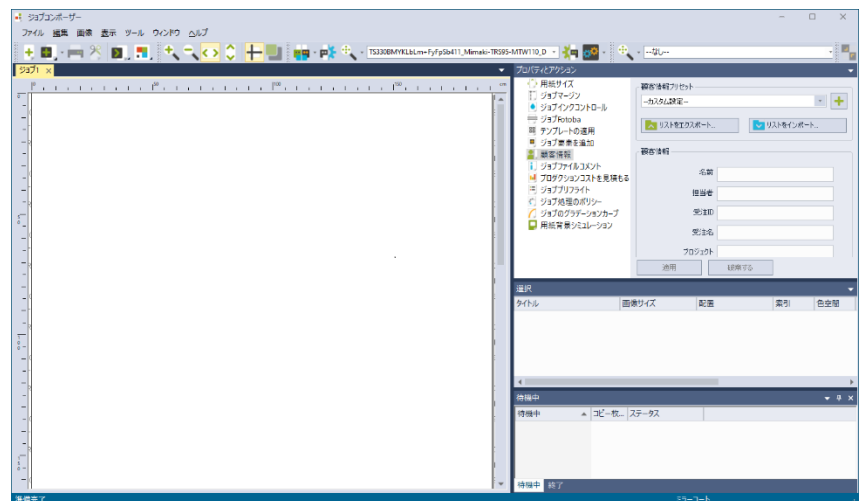
To start from the Start menu, select **[TxLink5] > [TxLink5 Control Center]**.



- 2 The **[TxLink5 Control Center]** screen is displayed.
Click **[Job Composer]**.



- 3 The **[Job Composer]** screen is displayed.



Using Spectrophotometer

Spectrophotometer setting

You can use Spectrophotometer for Creating Printer Profiles or Measuring Colors. Before using, modify the initial settings as below setting:

1 Select **[Tools] > [Application Defaults...]** menu from the **[Job Composer]** screen.

2 The **[Application Defaults]** screen is displayed.

Select **[Spectrophotometer]** from the left list on the screen.

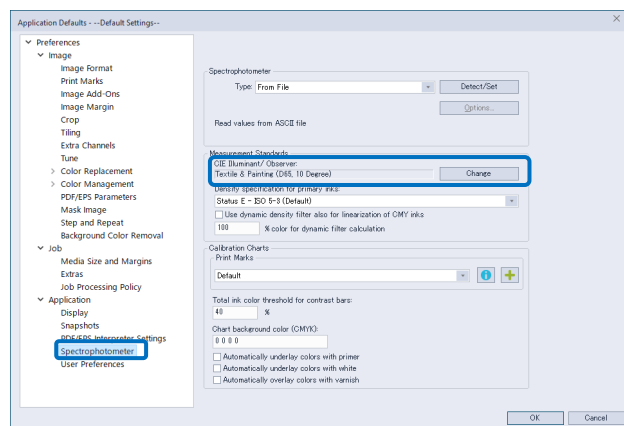
3 Click **[Change]** button on **[Measurement Standards]** area.

4 The **[Measurement Standards]** screen is displayed.

Select a proper Specification correspond to Printer profile in Print Environment be used.

Click **[OK]**.

5 Click **[OK]** and return the **[Application Defaults]** screen and close the screen.



Setting up Barbieri

If you wish to use **Barbieri** as a Spectrophotometer, you have to install dedicated **Barbieri Gateway** software for TxLink5.

1 Extract the TxLink5 installer file and double-click **[CD Menu.exe]**.

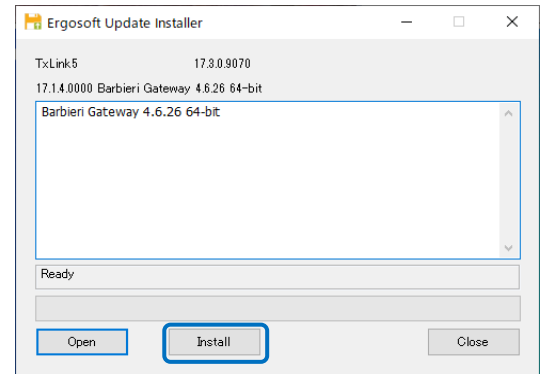
2 The CD Menu screen is displayed.

Click **[BARBIERI spectrometer Extension]**.



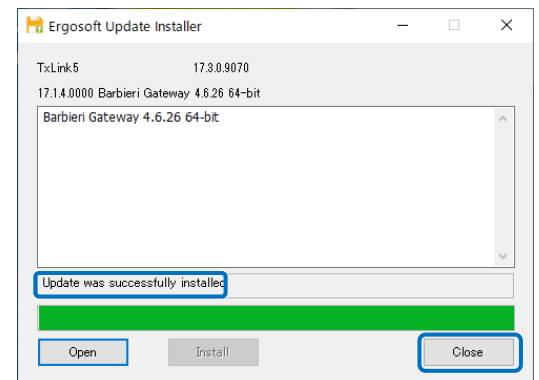
3 The **[Ergosoft Update Installer]** screen is displayed.

Click **[Install]**.



4 Installation will begin.

Click **[Close]** when the installation is complete message appears.



Changing the USB Dongle Location

The USB dongle location specified during TxLin5 installation can be changed using the Maintenance Tool.

1 Click **[MaintenanceTool]** in **[TxLink5 Control Center]** > **[Tool]**.

Click **[Troubleshooting]** > **[CodeMeter dongle network configuration]**.

The **[Dongle location]** screen is displayed.

